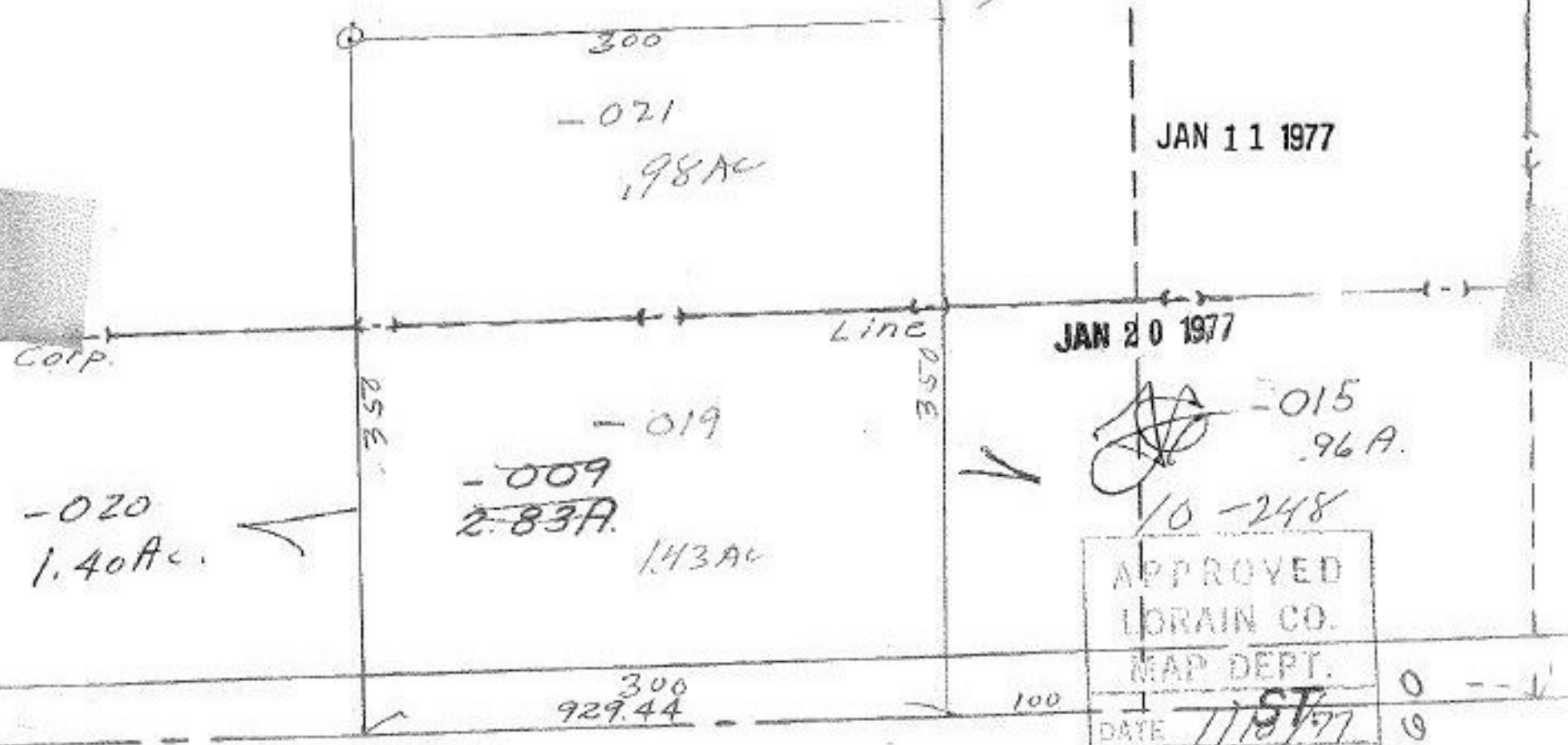


10248
9-00-074A

(101)

007
49.32A
-022
48.34 AC

-016
2.76A



JAN 11 1977

JAN 20 1977

10-248
-015
96A

APPROVED
LORAIN CO.
MAP DEPT.
DATE 1/18/77
PAGE 09-00-074A
BY L.W. Hall
VOID AFTER 2:40 PM

SEE 9-00-084-A

9-00-074A