

10-247
82.78

11.60A.
-004
11.65A
2745
-009
2740.50 11.63A.
2072.56
-010
26.30A. (18.04 A.)
2065.65

-008
6.12A.

-007
50.00A.

-002
4.75A.

-001
25.00A.

-003
46.64A.

-006
8.31A.

-003
39.94A.

422.94
287.22
135.72

2048.06 90

1289.66

-005
7.10A.

1289.66
1204.95

1801.81 71

-014
15.13A

-015
12.58Ac

-008
20.98

-009
20.41Ac

-004
80.00A.

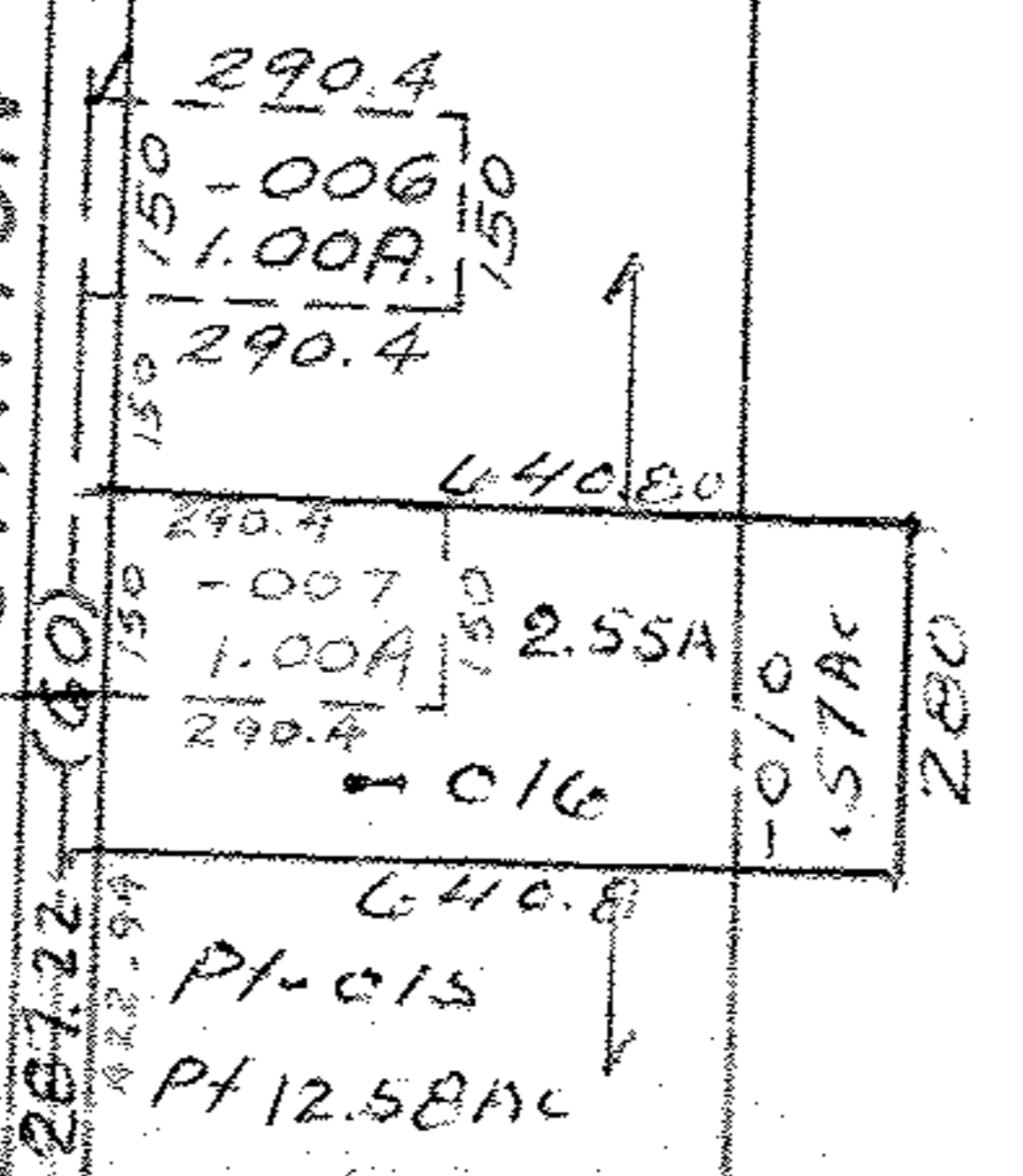
-007
59.02Ac

~~008~~
78.00A.
-013
62.87Ac

MAR 18 1977

348.48
-005
1.00A.
348.48

STATION



County Rd. Co. Com Res 76-301 4/22/76

10-247
APPROVED
LORAIN CO.
MAP DEPT.
DATE 11/10/77
PAGE 12E
BY L.W. Hall
VOID AFTER

RD.
(60)

TWP.

SCALE: 1" = 400'

LOTS

71 THRU 75, 86 THRU 9.

12E

JAN 28 1977

1356.30

970.61

1356.30

1367.52

89°06'

552.8

1223.74

766