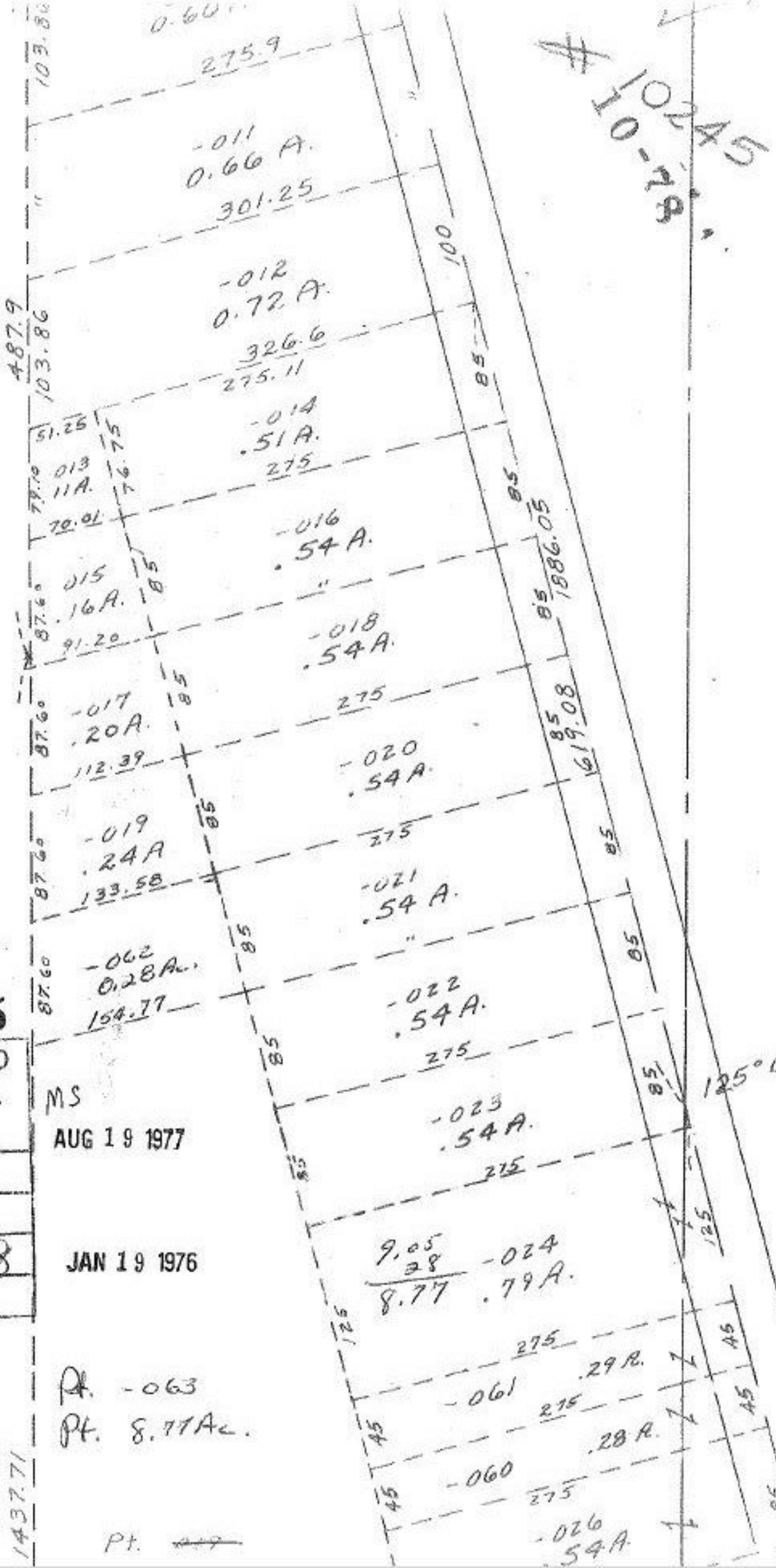


99.3
99.3
288.9



17

Pt. -006
Pt. 17.13A.

102

#10245

APPROVED	
LORAIN CO.	
MAP DEPT.	
DATE	1-7-77
PAGE	6-91
BY	J. Collins
VOID AFTER	

MS
AUG 19 1977

JAN 19 1976

Pt. -063
Pt. 8.77Ac.

Pt. 17

#10245

125°02'