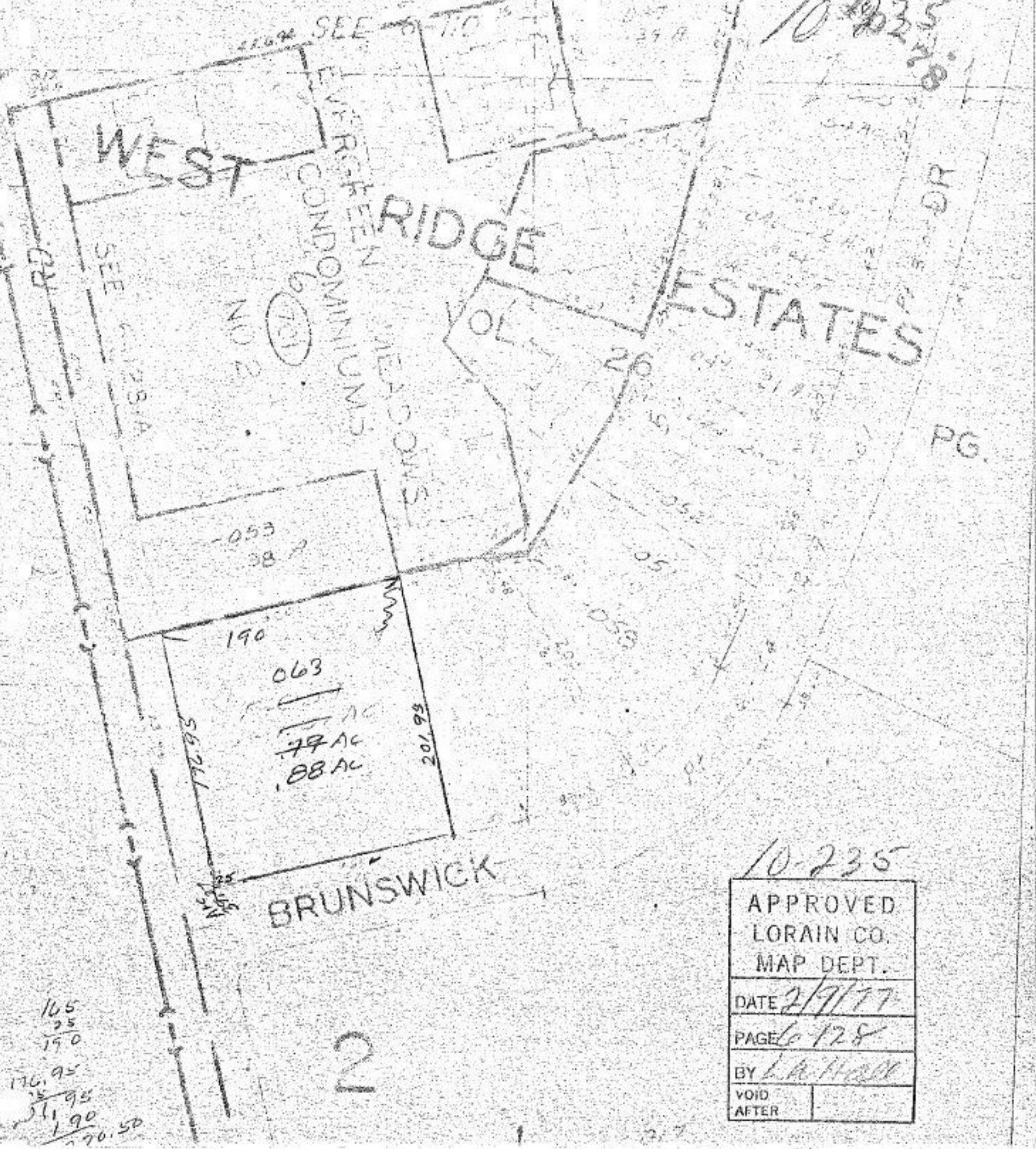


6

Pt 06-24-003-104
058
Pt 500

10-235



PG.

$$\begin{array}{r} 165 \\ 25 \\ \hline 190 \\ 176.95 \\ 15 \\ \hline 191.95 \\ 190 \\ \hline 70.50 \end{array}$$

21

10-235

APPROVED LORAIN CO. MAP DEPT.	
DATE	2/9/77
PAGE	128
BY	L.A. Hall
VOID AFTER	