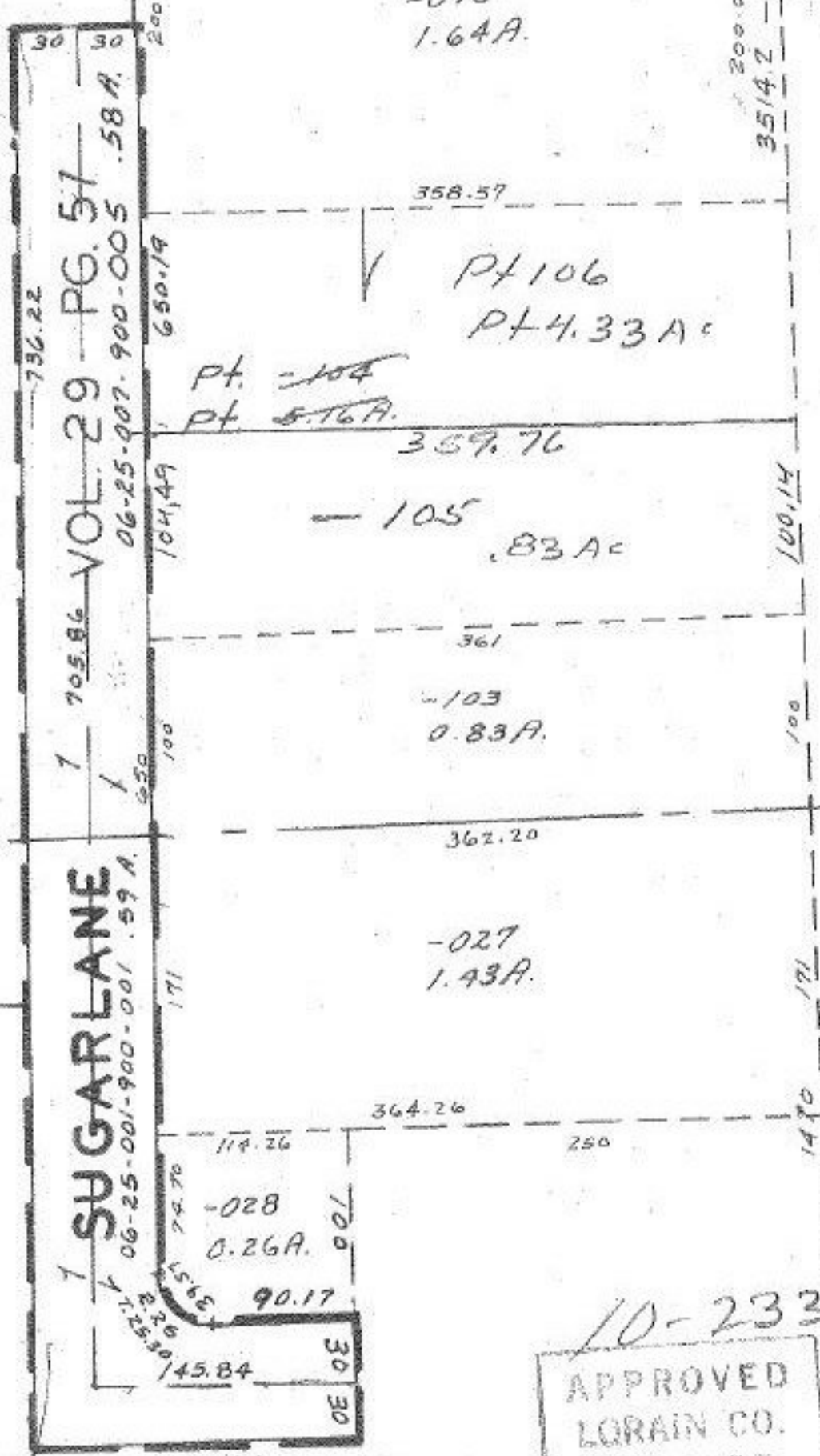


10-2330  
SEE: 6-126  
8'



7 705.86 VOL. 29 PG. 57  
 06-25-007-900-005 .58A.  
 736.22  
 30  
 30  
 200  
 650.19  
 104.49  
 100  
 100  
 171  
 171  
 1470  
 171

7 SUGARLANE  
 06-25-001-900-001 .59A.  
 171  
 171  
 1470  
 171

-090  
1.64A.

PT 106  
PT 4.33 AC

PT. -104  
PT. 5.16A.

-105  
.83 AC

-103  
0.83A.

-027  
1.43A.

-028  
0.26A.

10-233

APPROVED
LORAIN CO.
MAP DEPT.
DATE 1/5/77
PAGE 6-144
BY LWHall
VOID AFTER 400 PM

JAN 11 1977

6-125  
6-126

Aug. 23, 1977

J.B.

7