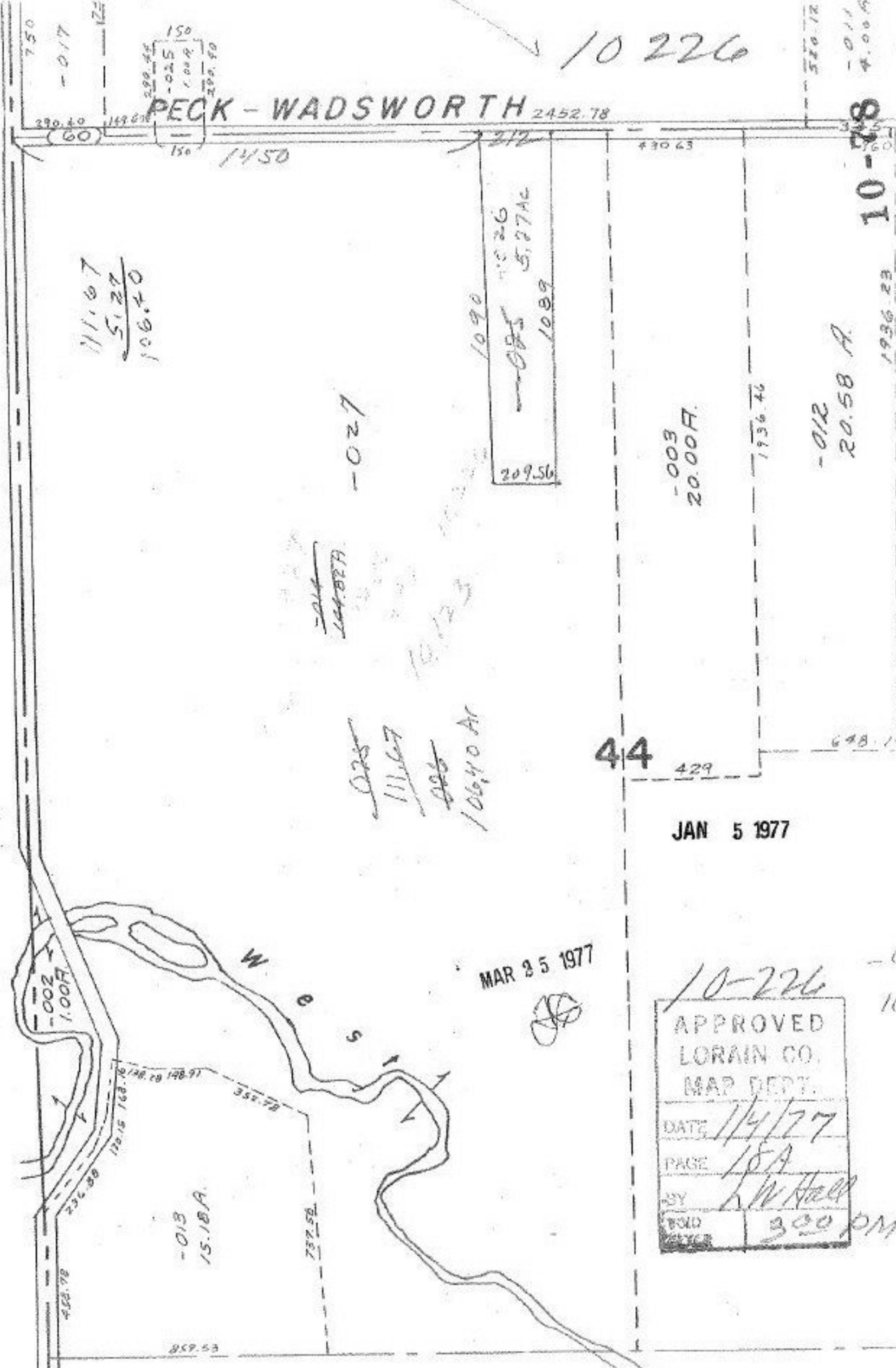


SEE 17-D



10 226

PECK - WADSWORTH 2452.78

$$\begin{array}{r} 111.67 \\ 5.27 \\ \hline 106.40 \end{array}$$

-027-

1090
 1089
 209.56
 1026
 5.27Ac

-003
20.00A.

-012
20.58 A.

586.12

10-78

1936.23

44

JAN 5 1977

MAR 25 1977

10-226

APPROVED
LORAIN CO.
MAP DEPT.
DATE 1/4/77
PAGE 15A
BY L.W. Hall
300 PM

-002
1.00A.

-013
15.18A.

