

COOPER FOSTER

REPLACES BY PLATS
-016 .78 AC
10-20-29 AC
599-32
10-78
10-193

RD

656.31

-015 1.31 AC

-013
.67 A.

-018
1.14 A.

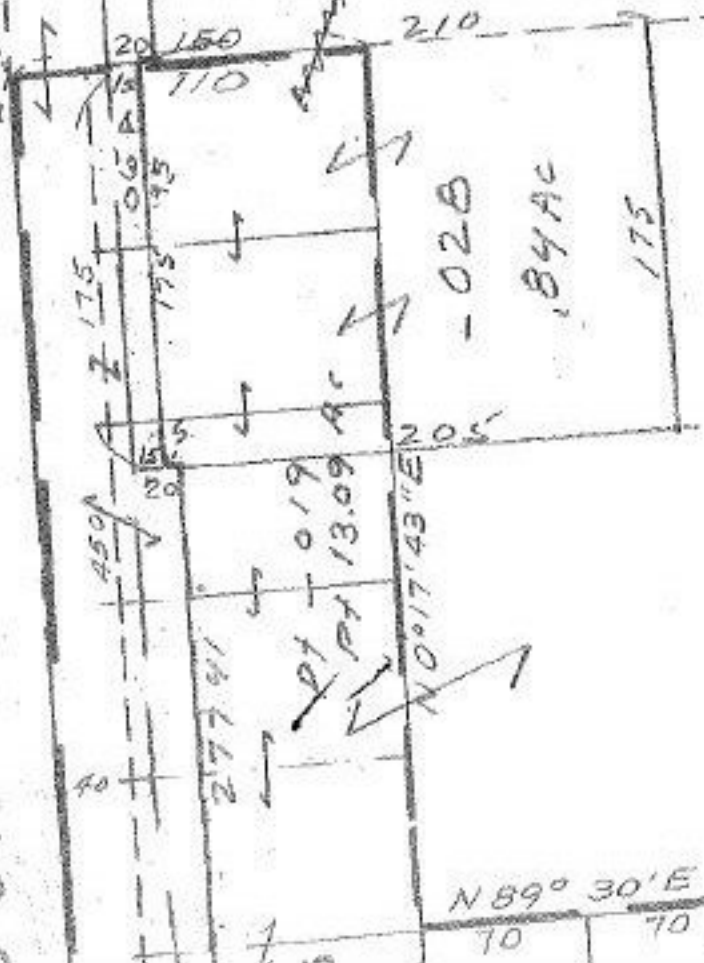
-019
13.09 AC

026
15.66 AC

-029
22.20 AC

101

0-040-B



10-193

APPROVED
LORAIN CO.
MAP DEPT
DATE 12/17/76
PAGE 05-00-041 A
BY L W Hall
VOID AFTER

DEC 17 1976

MS

AUG 17 1977

N 89° 30' E
70 70

S 89° 30' W