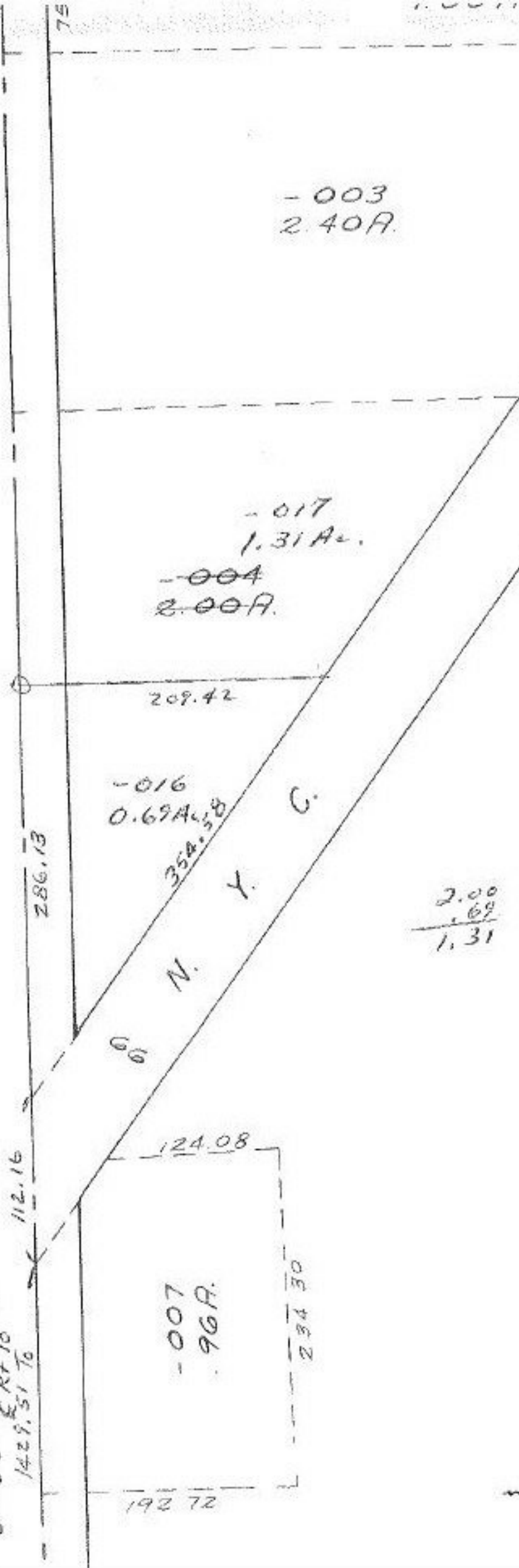


9-00-077-B  
1429.51 To



- 003  
2.40A.

- 017  
1.31A.

- 004  
2.00A.

209.42

- 016  
0.69A. 354.58

286.13

66

N. Y. C.

124.08

- 007  
96A.

234.30

192.72

500

10191-00  
2.83  
10191-00  
2.83

#10191

APPROVED LORAIN CO. MAP DEPT.
DATE 12-16-76
PAGE 9-00-078-A
BY J. J. [Signature]
VOID AFTER

2.00  
- .69  
1.31

S.D.  
5-12-76

[Signature]

DEC 17 1976

JAN 20 1977

