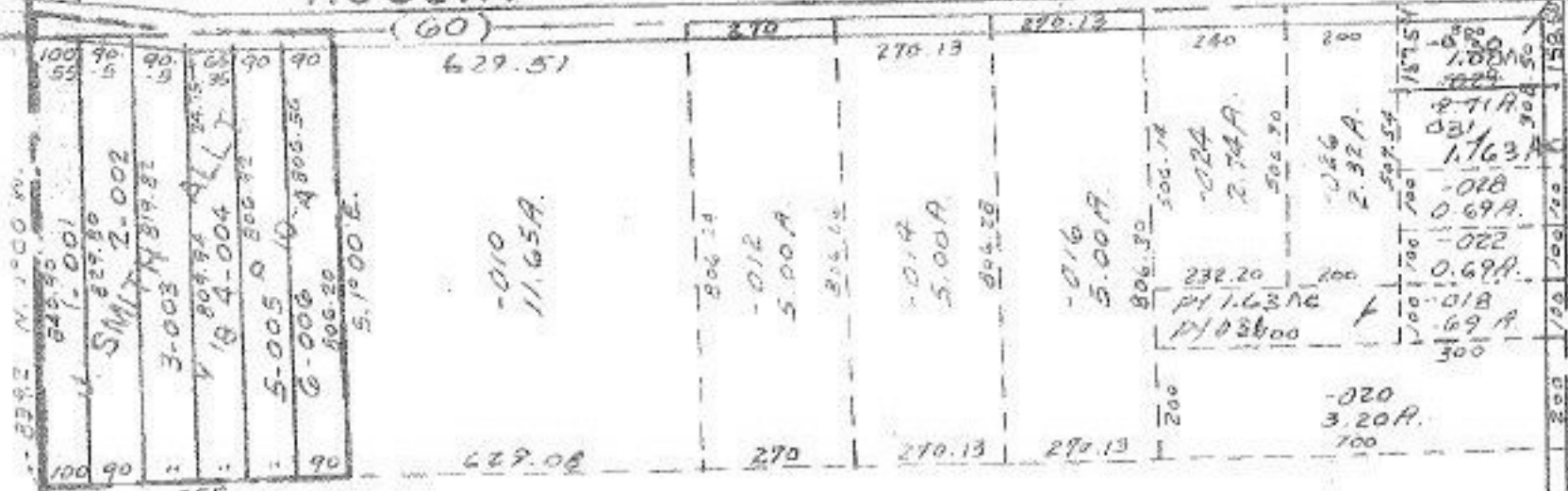


10-173

0900-021-000-030  
1.08 Ac

# RUSSIA



$$150 \times 300 + 100 \times 400 = 1.95 \text{ A.}$$

$$\frac{1.63}{0.32 \text{ A.}}$$

**21**

-008  
75.00A Dup.  
73.24A. Map

JAN 20 1977

-009  
39.00A.

-007  
41.12A.

10-173

APPROVED LORAIN CO. MAP DEPT.	
DATE	12/17/76
PAGE	9A
BY	L W Hall
VOID AFTER	11:30AM

DEC 8 1976

S.S.  
P. 12

-003  
75A.

-004  
70A.

349  
-003  
1.00A  
349

1234.2

435.65  
-008  
2.00A.  
435.65

203.4  
40°59'30"

125

164.03  
163.50  
-004  
70A.  
198

850

2874.6A

-006

23° 12' N. 1° 00' W.

12.5-5

-006

100

100

90

90

90

90

90

90

90

90

90

90

90

90

90

90

90

90

90

90

90

90

90

90

90

90

90

90

90

90

90

90

90

90

90

90

90

90

90

90

90

90

90