

-003
79.77A

TWB Rd

10-162

1378
798.64

1322

89°00'

2636

981.88

91°17'

89°12'

1650 D.
-013 1654 SUR. 5.68A

-014
5.68A

-008
11.36A

1650

-015
5.68A

-016
5.68A

-011
5.97A

-010
5.97A

-017
6.00A

-003 5.00A 13

-004 7.50A

1650
1654.62

FEB 10 1977

APPROVED
LORAIN CO.
MAP DEPT.

DATE 12/6/76

PAGE 12H

BY L.V. Hall

VOID AFTER 2:00 PM

EMMONS

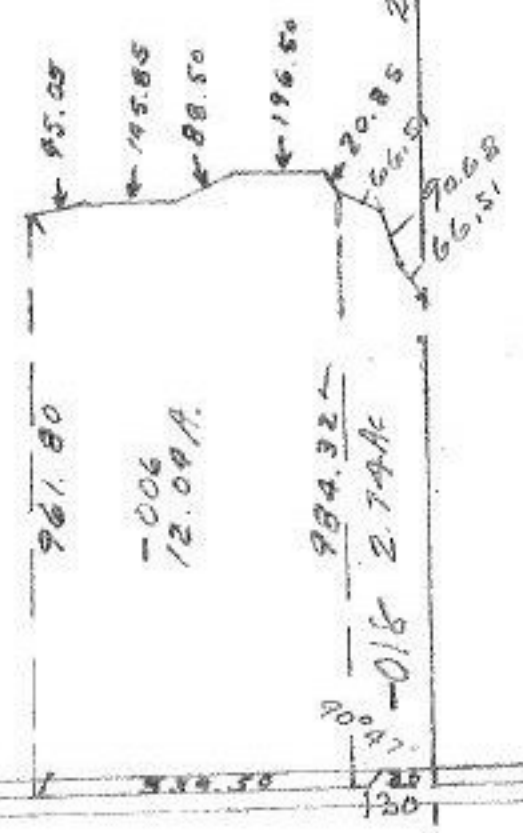
2639.01

DEC 8 1976

1157

89°08'

(60)



90°47'

130