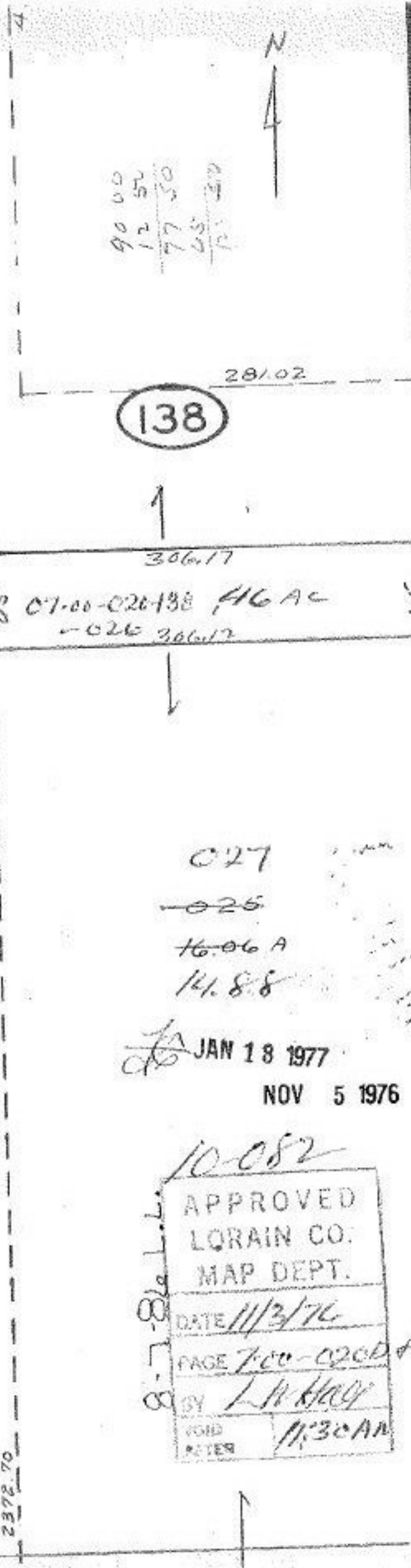


126.78 033  
 126.79 034  
 126.81 035  
 36 126.83 036  
 126.85 037  
 126.86 038  
 126.88 039  
 40 126.99 040  
 127.17 041  
 127.23 042  
 127.34 043  
 44 127.46 044  
 127.58 045  
 127.69 046  
 127.81 047  
 48 127.95 048

**ST.** 40  
 128.11 025  
 128.13 025  
 128.34 026  
 128.46 027  
 28 128.58 028  
 128.70 029  
 128.81 030  
 128.93 031  
 32 129.04 032  
 129.16 033  
 129.27 034  
 129.39 035  
 36 129.51 036  
 129.63 037  
 129.74 038  
 129.85 039  
 40 129.99 040  
 130.09 041  
 130.20 042  
 130.32 043  
 44 130.44 044  
 130.56 045  
 130.67 046  
 130.79 047  
 48 130.91 048  
**ST.** 40



8 0-009  
 9 -010  
 10 -011  
 11 -012  
 12 -013  
 13 -014  
 14 -015  
 15 -016  
 16 -017  
 17 -018  
 18 -019  
 19 -020  
 180

90 00  
 12 50  
 77 50  
 45  
 121 50

138

027  
 -025  
 16.06 A  
 14.8.8

JAN 18 1977  
 NOV 5 1976

APPROVED  
 LORAIN CO.  
 MAP DEPT.  
 DATE 11/3/76  
 PAGE 700-0260 + 021 B  
 BY L. W. HAY  
 VOID AFTER 11:30 AM

706.20  
 2372.70  
 20

-002  
 3.75 A

PG

25

NORTHVIEW  
 VOL.