

10-021

10-78/10-021

10-021

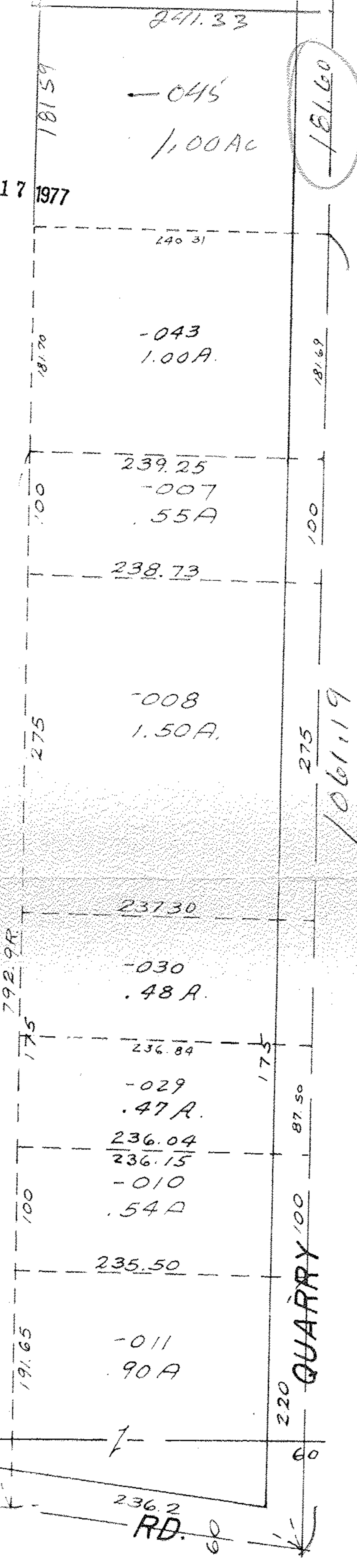
APPROVED	
LORAIN CO.	
MAP DEPT.	
DATE	10/8/76
PAGE	5-00-095B
BY	L. W. Hall
VOID AFTER	11:10 AM

MS

AUG 17 1977

OCT 13 1976

046
~~044~~
~~46.43~~
 45.43



SEE 5-00-095

10021
 10-78
 10-78-01