

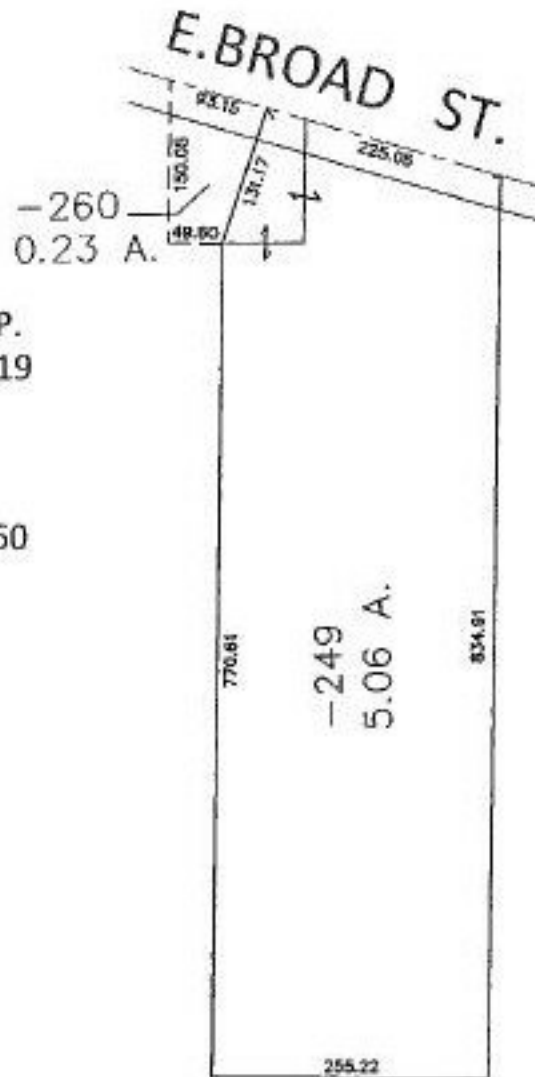
PASTER

PARENT PARCEL: 06-25-007-000-019

CHILD PARCEL: 06-25-007-000-260

09-01868-X

STARTING POINT:



DROP FROM DUP.  
06-25-007-000-019  
0.38 A.

ADD TO DUP.  
06-25-007-000-260  
0.23 A.

CORRECTING SPLIT NO. 02-01089



**SPLITS/DEEDS PROCESSED**

LORAIN COUNTY TAX MAP DEPARTMENT  
226 MIDDLE AVE. ELYRIA, OHIO

SURVEYED BY: DAVID L. ELWELL

CLOSURE: \_\_\_\_\_

MAP PAGE(S): 06-126

APPROVED BY: RRM DATE: 8/5/09

SCALE: 1" = 200' PRIOR INST.: 20020832334