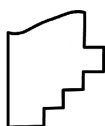
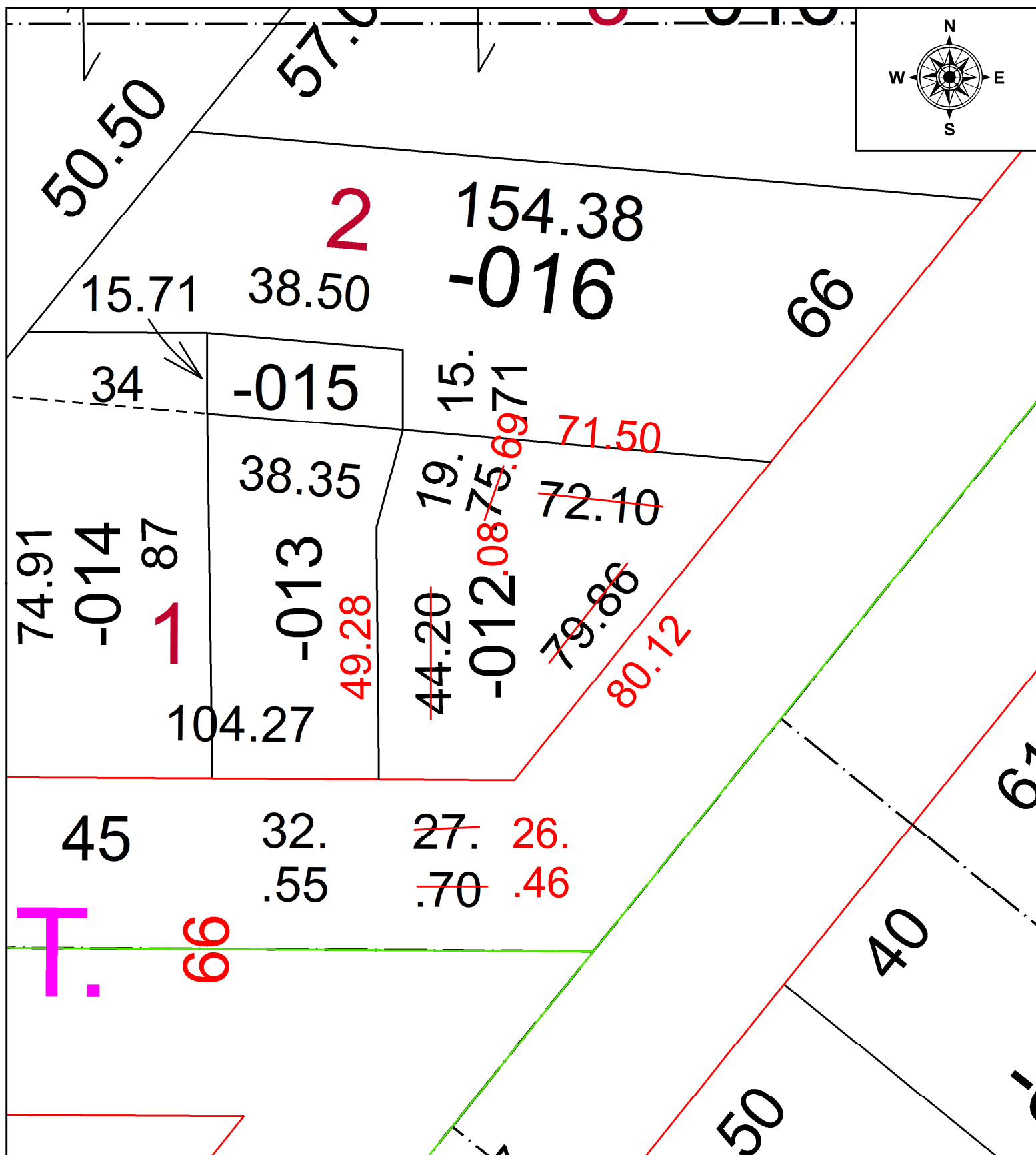
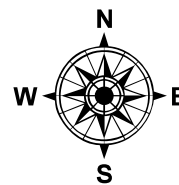


STARTING POINT: SE CORNER OF S/L 1

25-05621-C



SPLITS/DEEDS PROCESSED
LORAIN COUNTY TAX MAP DEPARTMENT
226 MIDDLE AVE. ELYRIA, OH

SURVEYED BY: THOMAS A. SIMON **SURV #** 51589
CLOSURE: 1: 435620
MAP PAGE(S): 06-24
APPROVED BY: AC **DATE:** November 06, 2025
SCALE: 1 in = 25 ft **PRIOR INSTRUMENT:** 2024- 0026442