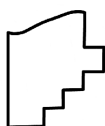
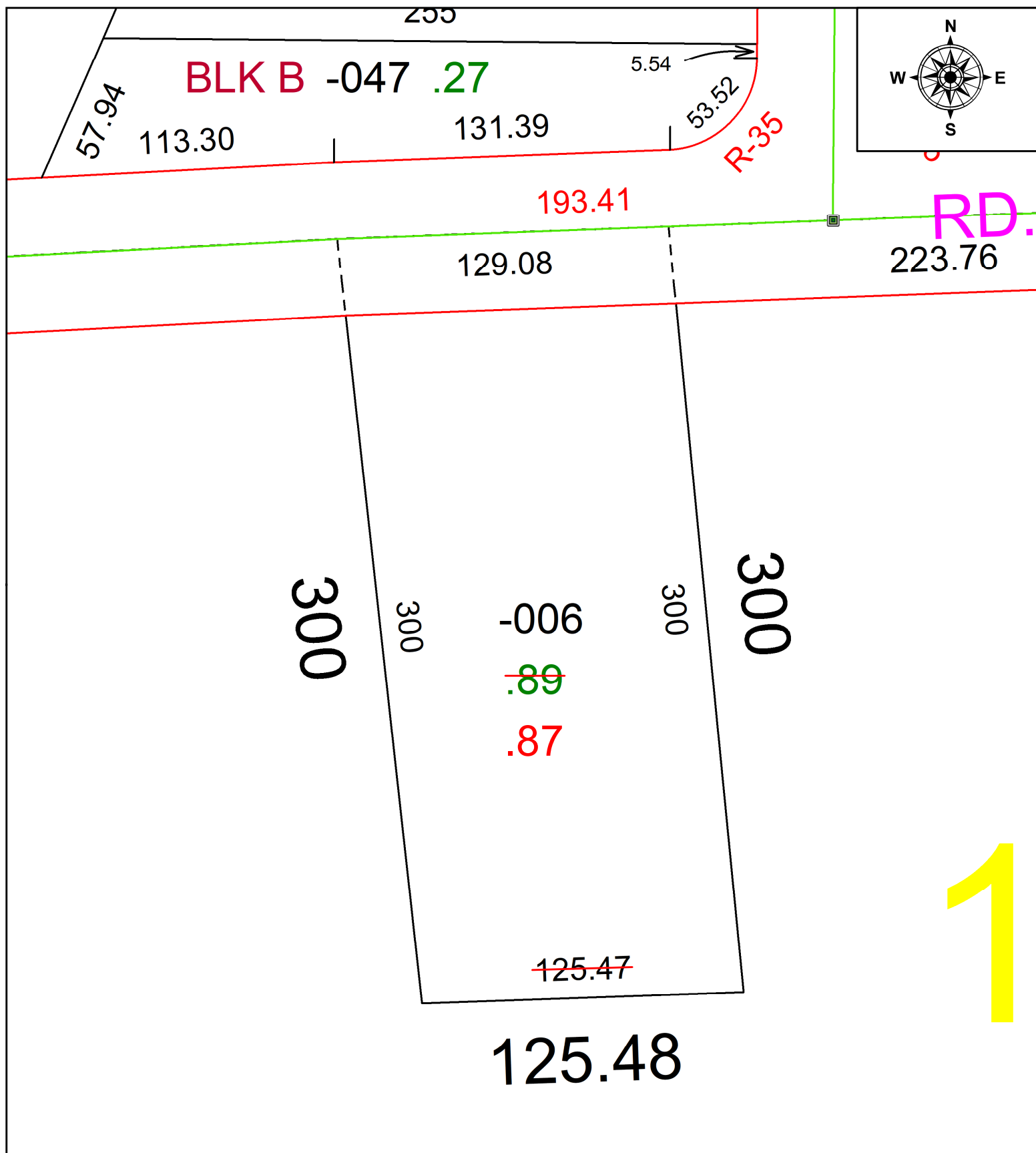


25-05607-C



## SPLITS/DEEDS PROCESSED

LORAIN COUNTY TAX MAP DEPARTMENT  
226 MIDDLE AVE. ELYRIA, OH

**SURVEYED BY:** MICHAEL A. ACKERMAN

**SURV # 51575**

**CLOSURE:** 1: 78306

MAP PAGE(S): 12-00-018

**APPROVED BY:** AC **DATE:** October 24, 2025

**SCALE:** 1 in = 50 ft **PRIOR INSTRUMENT:** 2023- 0906440