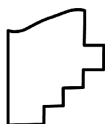
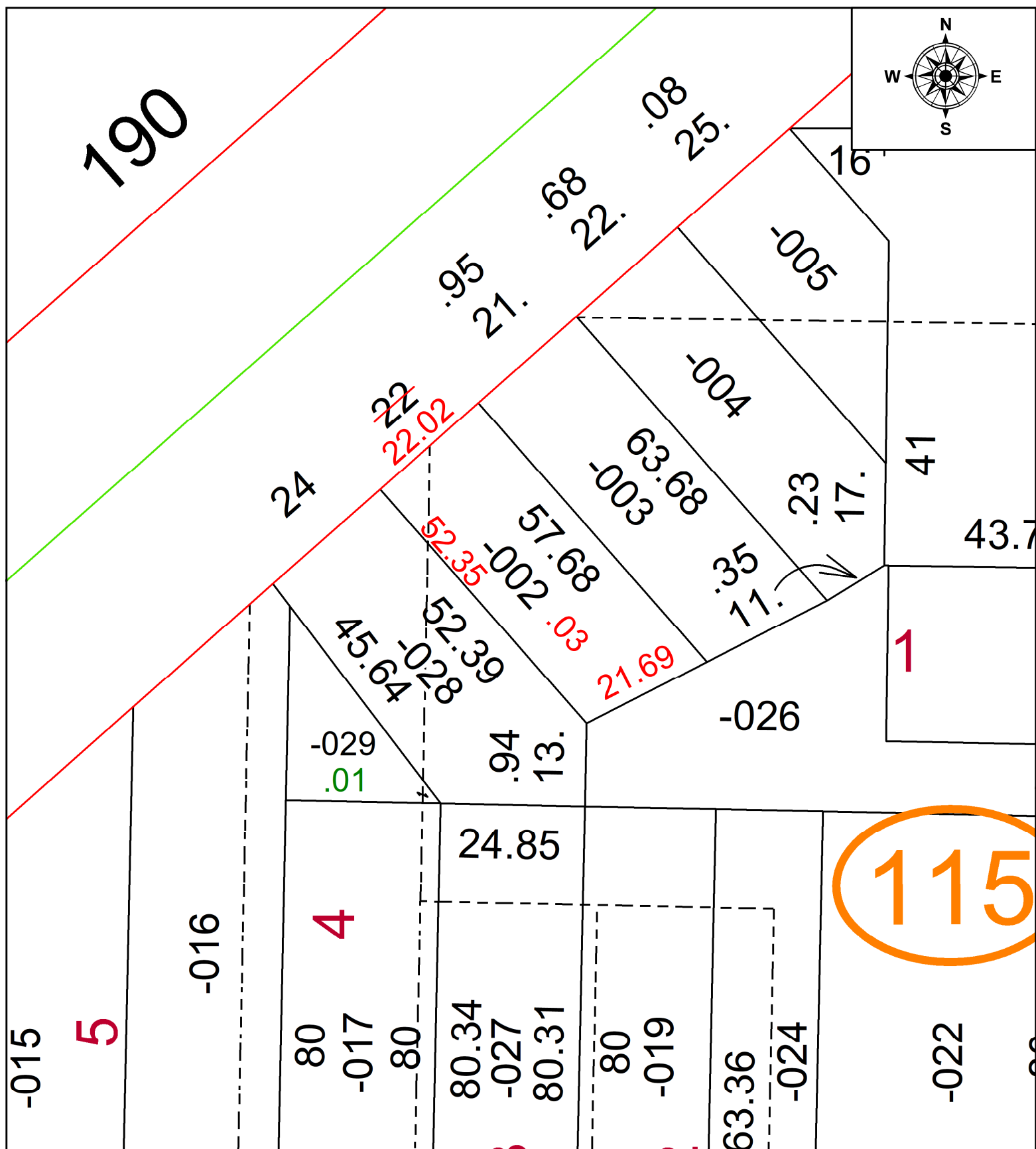


25-05557-C



SPLITS/DEEDS PROCESSED

LORAIN COUNTY TAX MAP DEPARTMENT
226 MIDDLE AVE. ELYRIA, OH

SURVEYED BY: THOMAS M. SNEZEK

SURV # 51514

CLOSURE: 1: 39614

MAP PAGE(S): 18-00-028

APPROVED BY: AC **DATE:** August 11, 2025

SCALE: 1 in = 21 ft **PRIOR INSTRUMENT:** 2017- 0648885