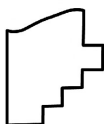
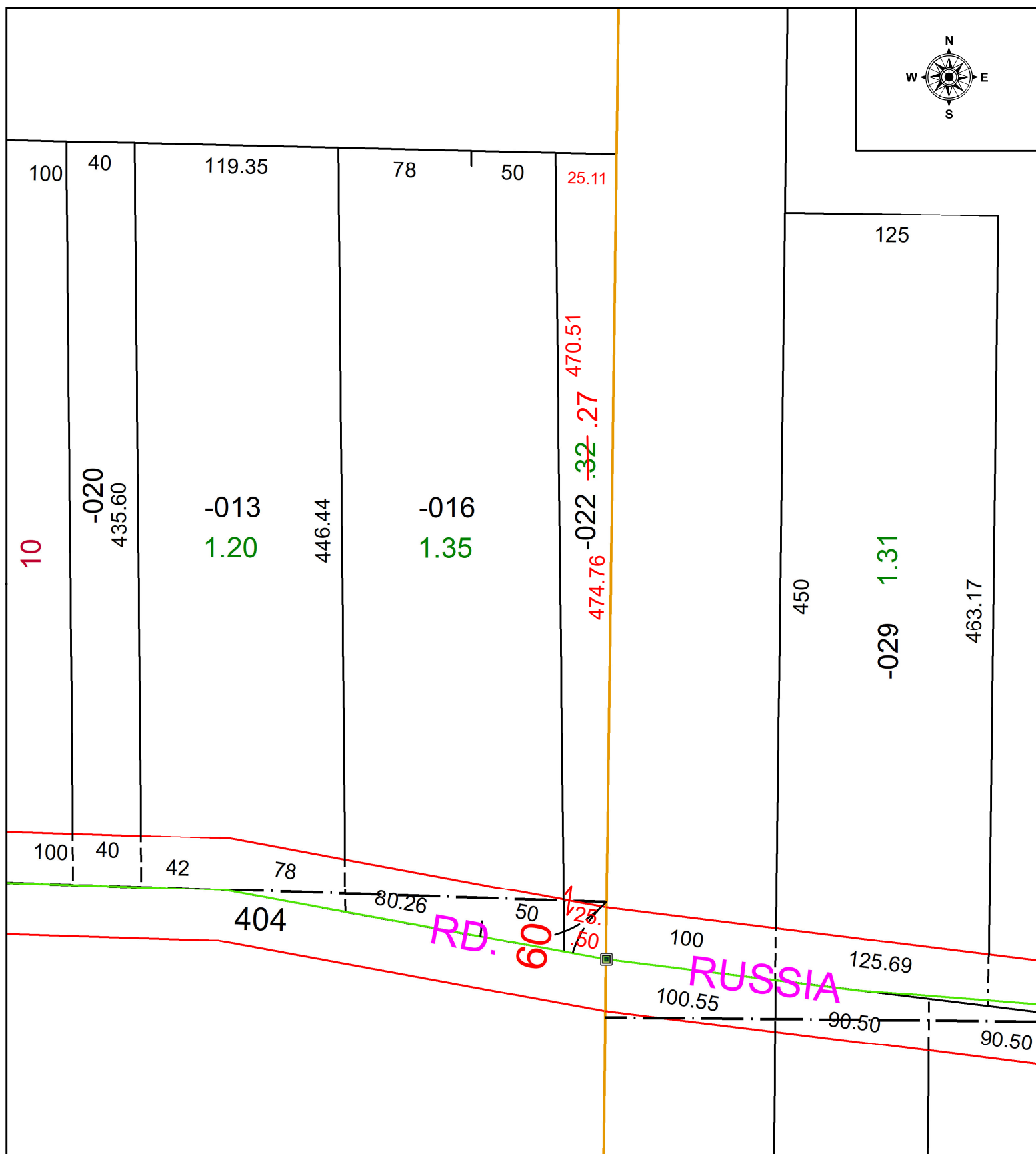
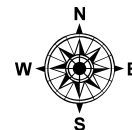


08-00-089-000-022

AC CORR PER SURVEYOR THOMAS SIMON

INTERSECTION OF C/L OF RUSSIA RD & EAST LINE OF HENRIETTA TWP

25-05483-C



## SPLITS/DEEDS PROCESSED

LORAIN COUNTY TAX MAP DEPARTMENT  
226 MIDDLE AVE. ELYRIA, OH

**SURVEYED BY:** THOMAS SIMON

SURVEY # 51424

**CLOSURE:** 1: 131348

MAP PAGE(S): 08-00-089

**APPROVED BY:** WRZ      **DATE:** 4/14/2025

**SCALE:** 1" = 75' **PRIOR INSTRUMENT:** DV 874 PG 161

**SCALE:** 1" = 75 **PRIOR INSTRUMENT:** DV 874 PG 161