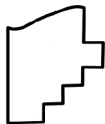
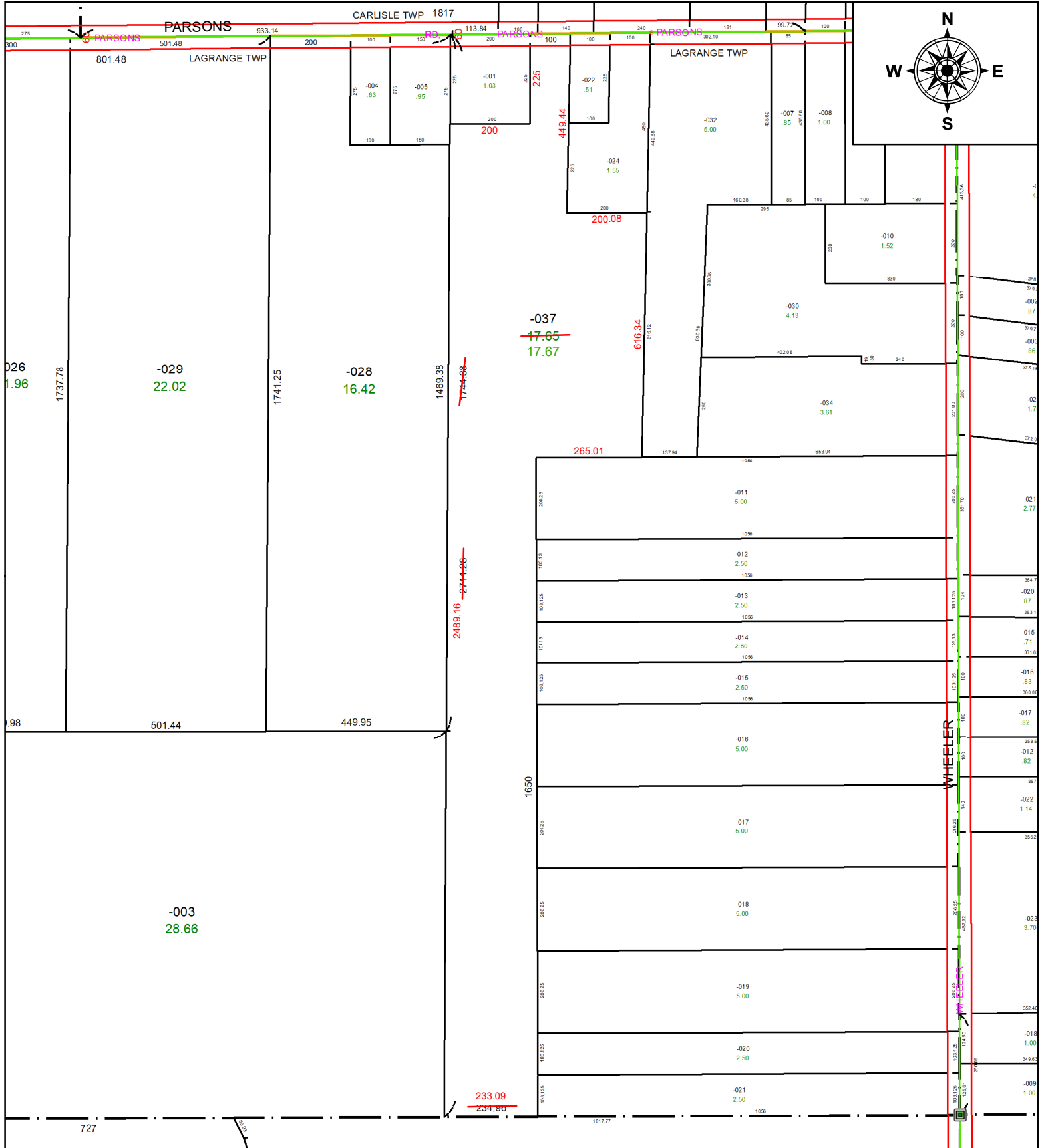


PARENT PARCEL: 15-00-007-000-037

CHILD PARCEL: MAP CORRECTION ONLY

STARTING POINT: INTERSECTION OF WHEELER AND PARSONS RD

25-05453-A



SPLITS/DEEDS PROCESSED
 LORAIN COUNTY TAX MAP DEPARTMENT
 226 MIDDLE AVE. ELYRIA, OH

SURVEYED BY: THOMAS A. SIMON **SURVEY #:** 51385
CLOSURE: 1: 468793
MAP PAGE(S): 15-00-007
APPROVED BY: BB **DATE:** 2/3/2025
SCALE: 1" = 320' **PRIOR INSTRUMENT:** #20150539426