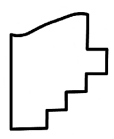
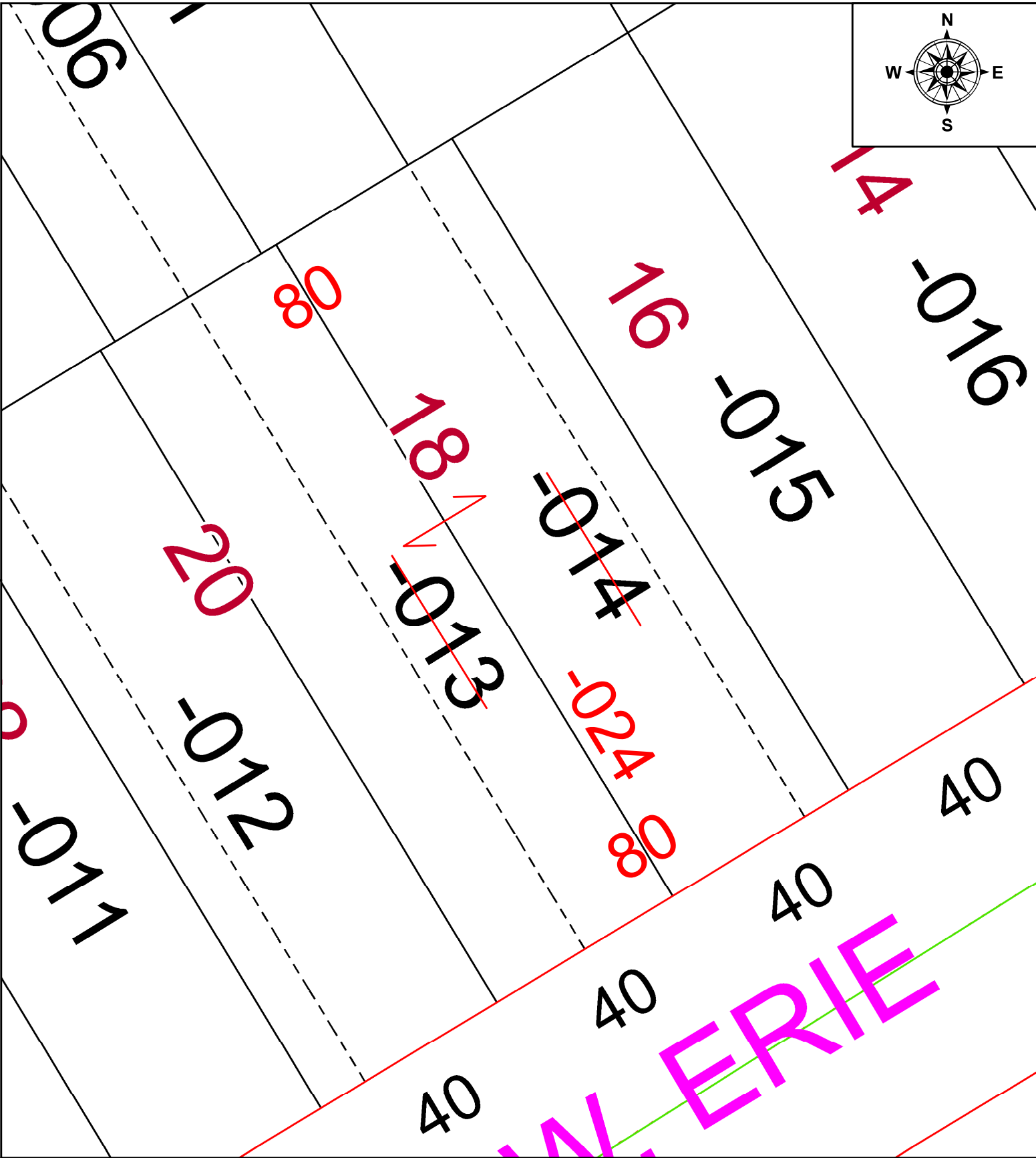
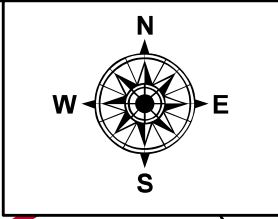


PARENT PARCEL: 02-02-026-103-013 & -014

CHILD PARCEL: 02-02-026-103-024

STARTING POINT: COMBINATION PER PRIOR DEED

25-05449-C



SPLITS/DEEDS PROCESSED
LORAIN COUNTY TAX MAP DEPARTMENT
226 MIDDLE AVE. ELYRIA, OH

| | | | |
|--------------|--------------|-------------------|------------------|
| SURVEYED BY: | N/A | SURV # | N/A |
| CLOSURE: | N/A | | |
| MAP PAGE(S): | 02-02-026 | | |
| APPROVED BY: | AC | DATE: | January 29, 2025 |
| SCALE: | 1 in = 25 ft | PRIOR INSTRUMENT: | 2024- 0024337 |