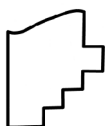
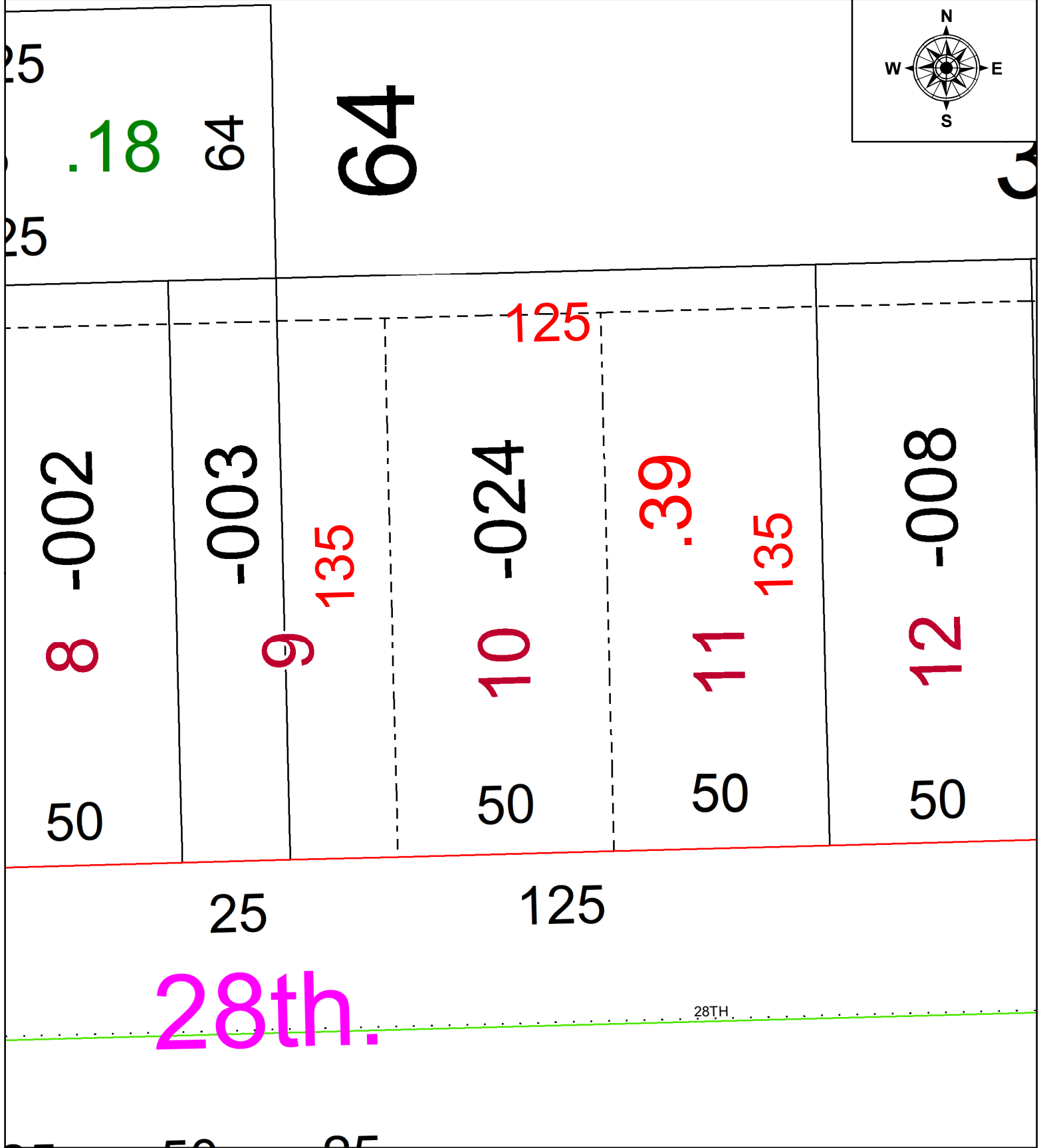
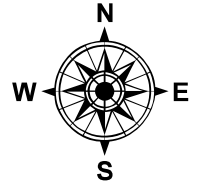


PARENT PARCEL: 03-00-087-102-024

CHILD PARCEL: AC MAP CORRECTION

STARTING POINT: SW CORNER OF S.L 25 OF SHEFFIELD LND CO 1st SUB

25-05440-C



SPLITS/DEEDS PROCESSED
LORAIN COUNTY TAX MAP DEPARTMENT
226 MIDDLE AVE. ELYRIA, OH

SURVEYED BY: JOSHUA C. LAMBERT	SURVEY #: 51366
CLOSURE: 1: INF	
MAP PAGE(S): 03-00-087	
APPROVED BY: BB	DATE: 1/9/2025
SCALE: 1" = 30'	PRIOR INSTRUMENT: #20230917200