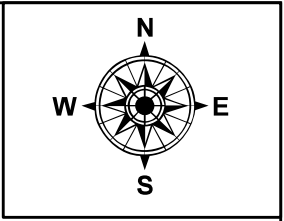
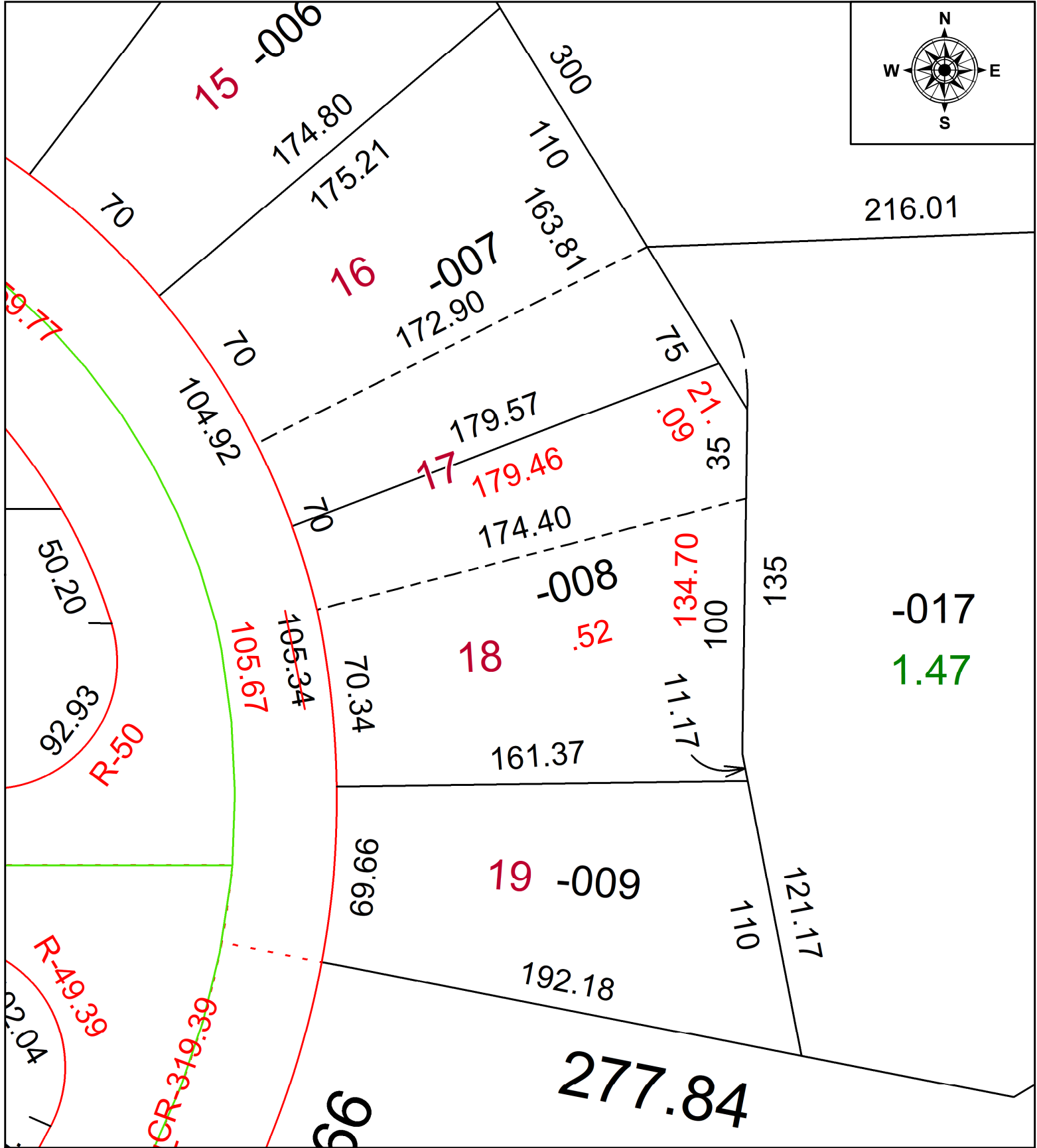


PARENT PARCEL: 06-25-031-114-008

CHILD PARCEL: **FRONT & DEPTH TO AC CORR PER SURV BY RONALD W. HINTON**

24-05429-C

STARTING POINT: NW CORNER OF S/L 19



SPLITS/DEEDS PROCESSED
 LORAIN COUNTY TAX MAP DEPARTMENT
 226 MIDDLE AVE. ELYRIA, OH

SURVEYED BY: RONALD W. HINTON SURV # 51353
 CLOSURE: 1: 165551
 MAP PAGE(S): 06-25
 APPROVED BY: AC DATE: December 26, 2024
 SCALE: 1 in = 50 ft PRIOR INSTRUMENT: 2024- 0006824