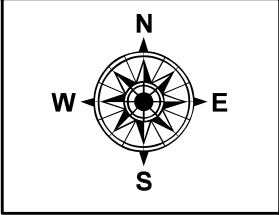


PARENT PARCEL: 12-00-047-101-007

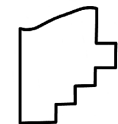
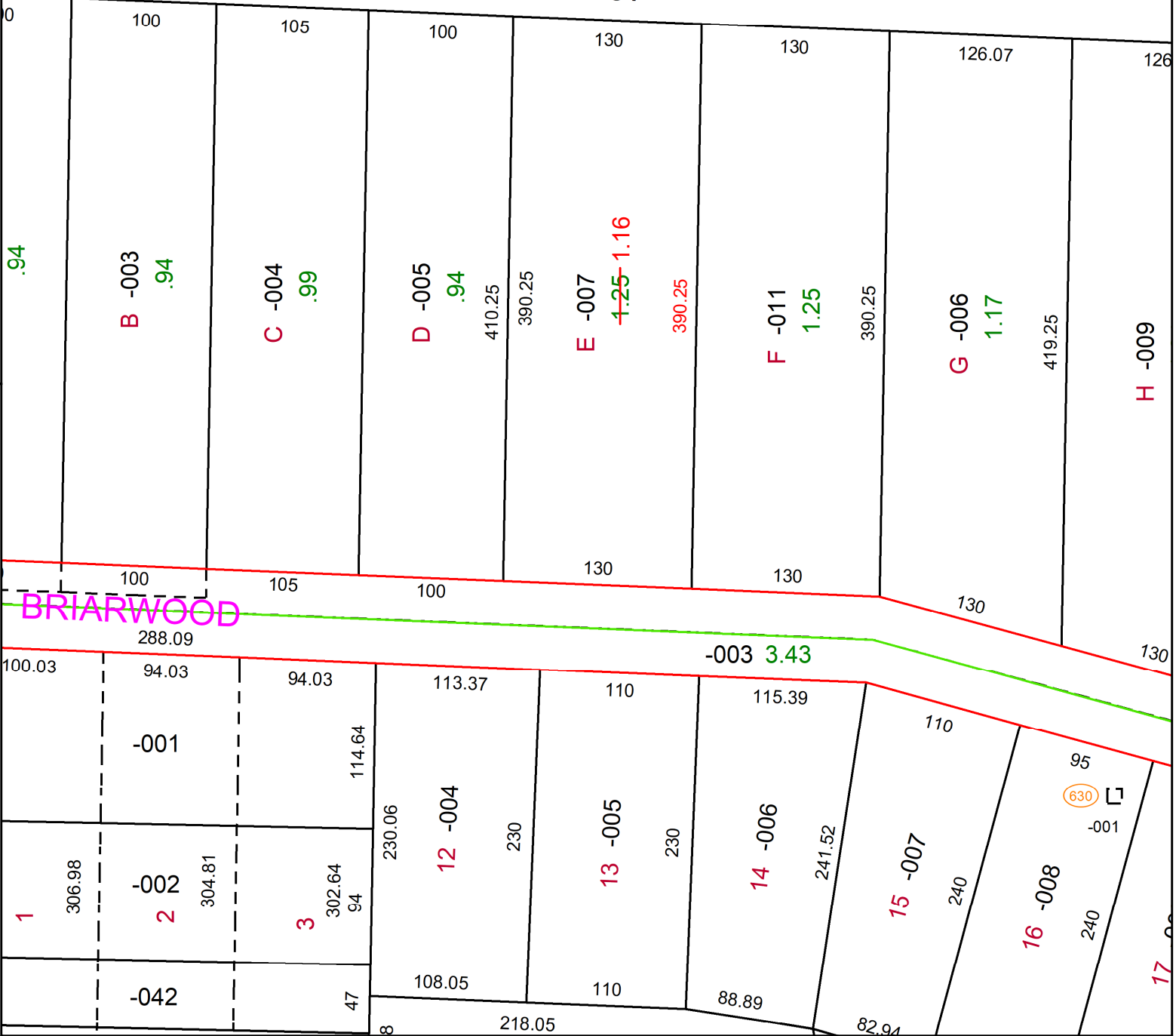
CHILD PARCEL: **AC CORR PER SURV BY ROBERT M. RUFFING**

STARTING POINT: SW CORNER OF LOT F

24-05427-A



916.97



SPLITS/DEEDS PROCESSED
LORAIN COUNTY TAX MAP DEPARTMENT
226 MIDDLE AVE. ELYRIA, OH

SURVEYED BY: ROBERT M. RUFFING SURV # 51350
CLOSURE: 1: 183434
MAP PAGE(S): 12-00-047
APPROVED BY: AC DATE: December 23, 2024
SCALE: 1 in = 100 ft PRIOR INSTRUMENT: 2024- 0016876