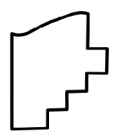
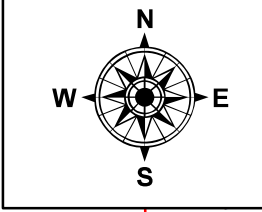
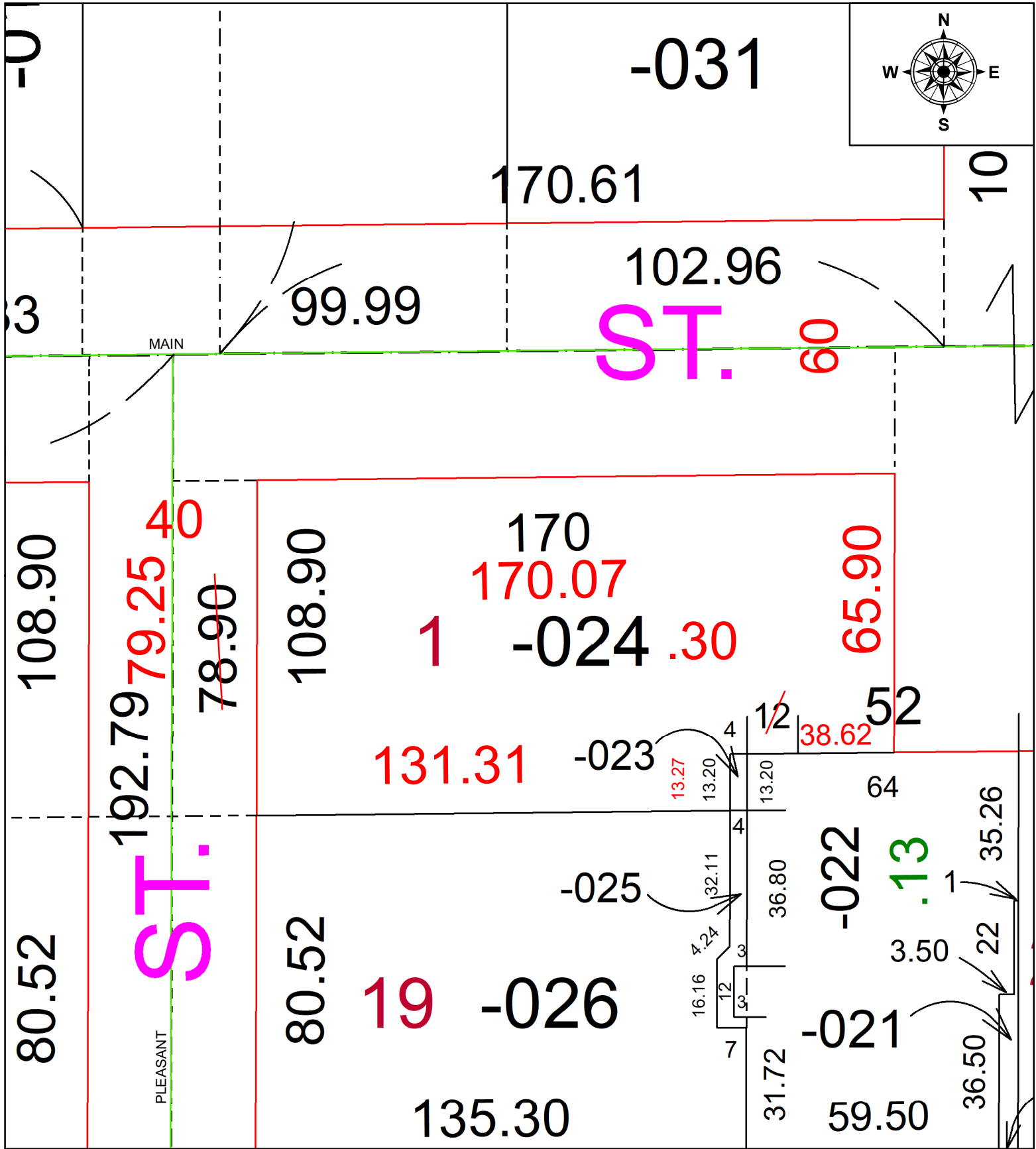


PARENT PARCEL: 15-00-056-103-024

CHILD PARCEL: AC CORRECTION

24-05425-C

STARTING POINT: SOUTH R.O.W WEST MAIN ST AND WEST R.O.W OF PLEASANT DRIVE



SPLITS/DEEDS PROCESSED
 LORAIN COUNTY TAX MAP DEPARTMENT
 226 MIDDLE AVE. ELYRIA, OH

SURVEYED BY: RONALD W. HINTON SURVEY #: 51347
 CLOSURE: 1: 85409
 MAP PAGE(S): 1500056
 APPROVED BY: BB DATE: 12/19/2024
 SCALE: 1" = 30' PRIOR INSTRUMENT: #20230931568