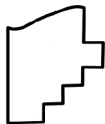
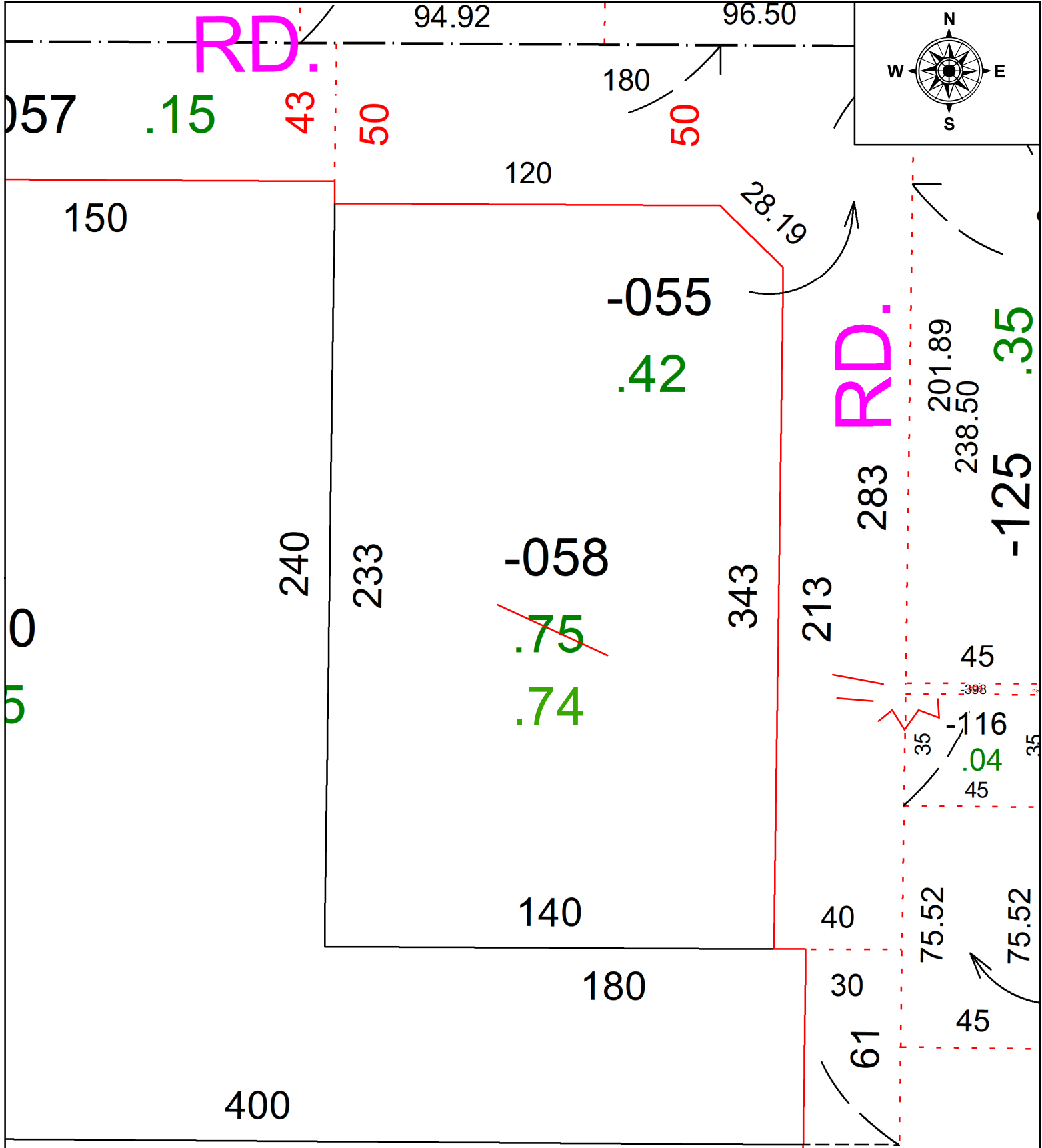


PARENT PARCEL: 04-00-017-101-058

CHILD PARCEL: AC CORRECTION PER PIOR #19890053941

STARTING POINT: BASED ON PIOR #19890053941

24-05421-C



SPLITS/DEEDS PROCESSED
 LORAIN COUNTY TAX MAP DEPARTMENT
 226 MIDDLE AVE. ELYRIA, OH

SURVEYED BY: N/A SURVEY #: N/A
 CLOSURE: N/A
 MAP PAGE(S): 04-00-017
 APPROVED BY: BB DATE: 12/12/2024
 SCALE: 1" = 50' PRIOR INSTRUMENT: 1989-0053941