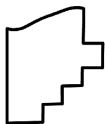
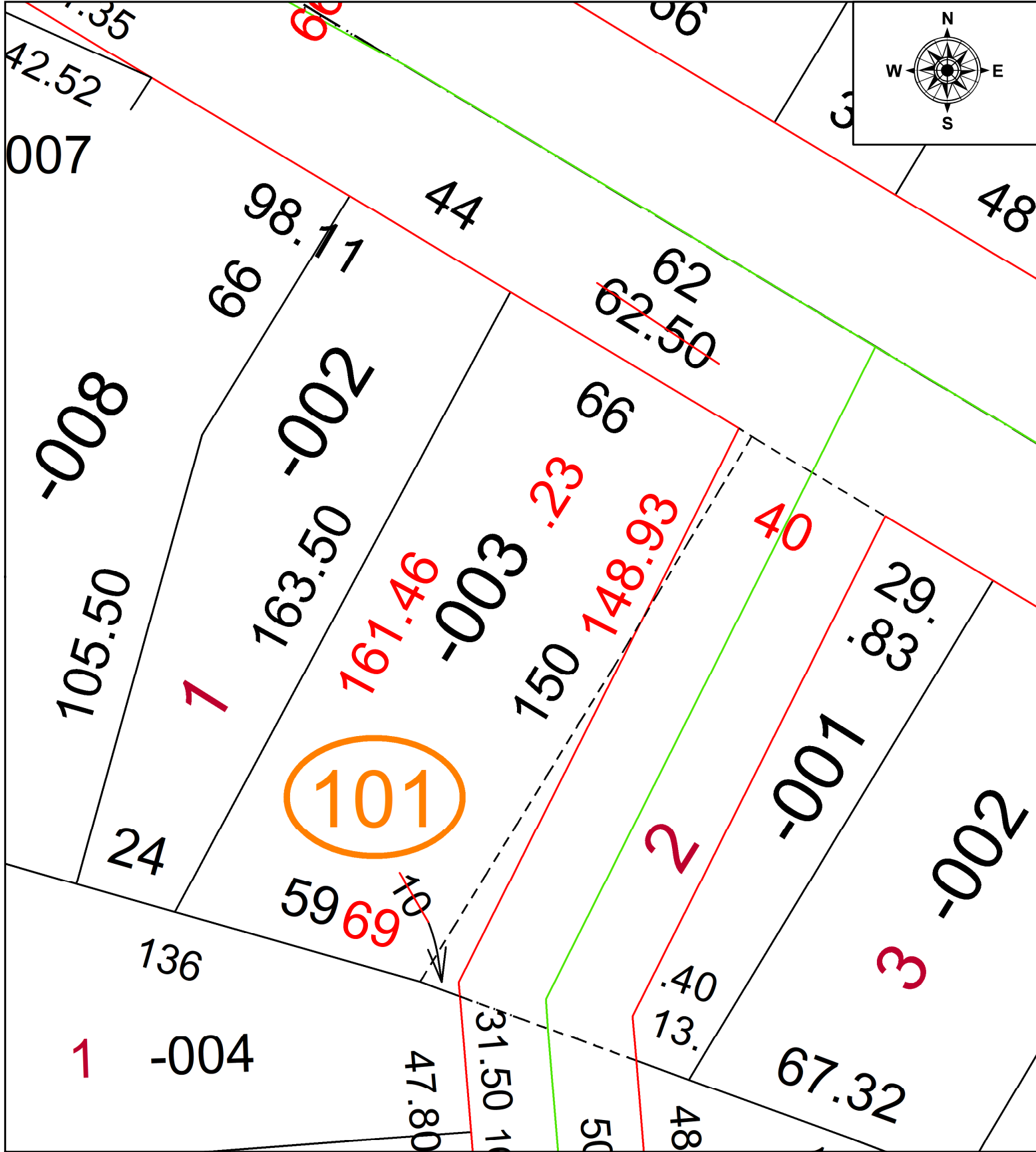


PARENT PARCEL: 06-25-098-101-003

CHILD PARCEL: FRONT & DEPTH TO AC CORR PER SURV BY AMY M. KELLY

STARTING POINT: C/L OF 4TH ST AND CHARLES ST

24-05417-C



SPLITS/DEEDS PROCESSED
LORAIN COUNTY TAX MAP DEPARTMENT
226 MIDDLE AVE. ELYRIA, OH

SURVEYED BY:	AMY M. KELLY	SURV # 51337
CLOSURE:	1: 82459	
MAP PAGE(S):	06-25	
APPROVED BY:	AC	DATE: December 04, 2024
SCALE:	1 in = 30 ft	PRIOR INSTRUMENT: 2024- 0016374