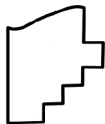
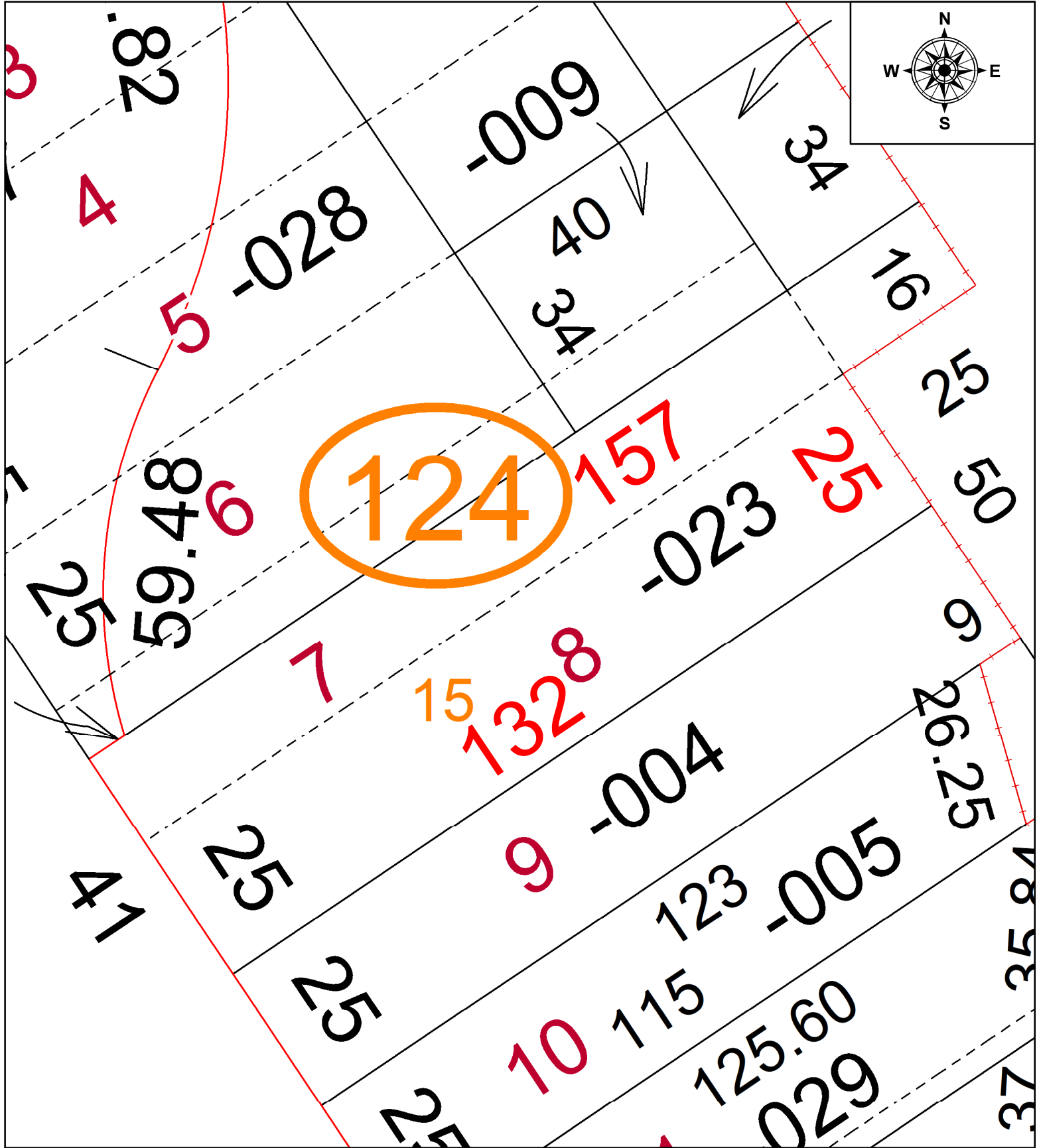


PARENT PARCEL: 02-01-003-124-023

CHILD PARCEL: **MAP CORR. ONLY**

STARTING POINT: SOUTHWEST CORNER OF SUBLOT 8

24-05413-C



SPLITS/DEEDS PROCESSED
 LORAIN COUNTY TAX MAP DEPARTMENT
 226 MIDDLE AVE. ELYRIA, OH

SURVEYED BY: ROBERT M. RUFFING	SURVEY #: 51339
CLOSURE: 1:INF	
MAP PAGE(S): 02-01-003	
APPROVED BY: BB	DATE: 12/9/2024
SCALE: 1" = 20'	PRIOR INSTRUMENT: #20120404879