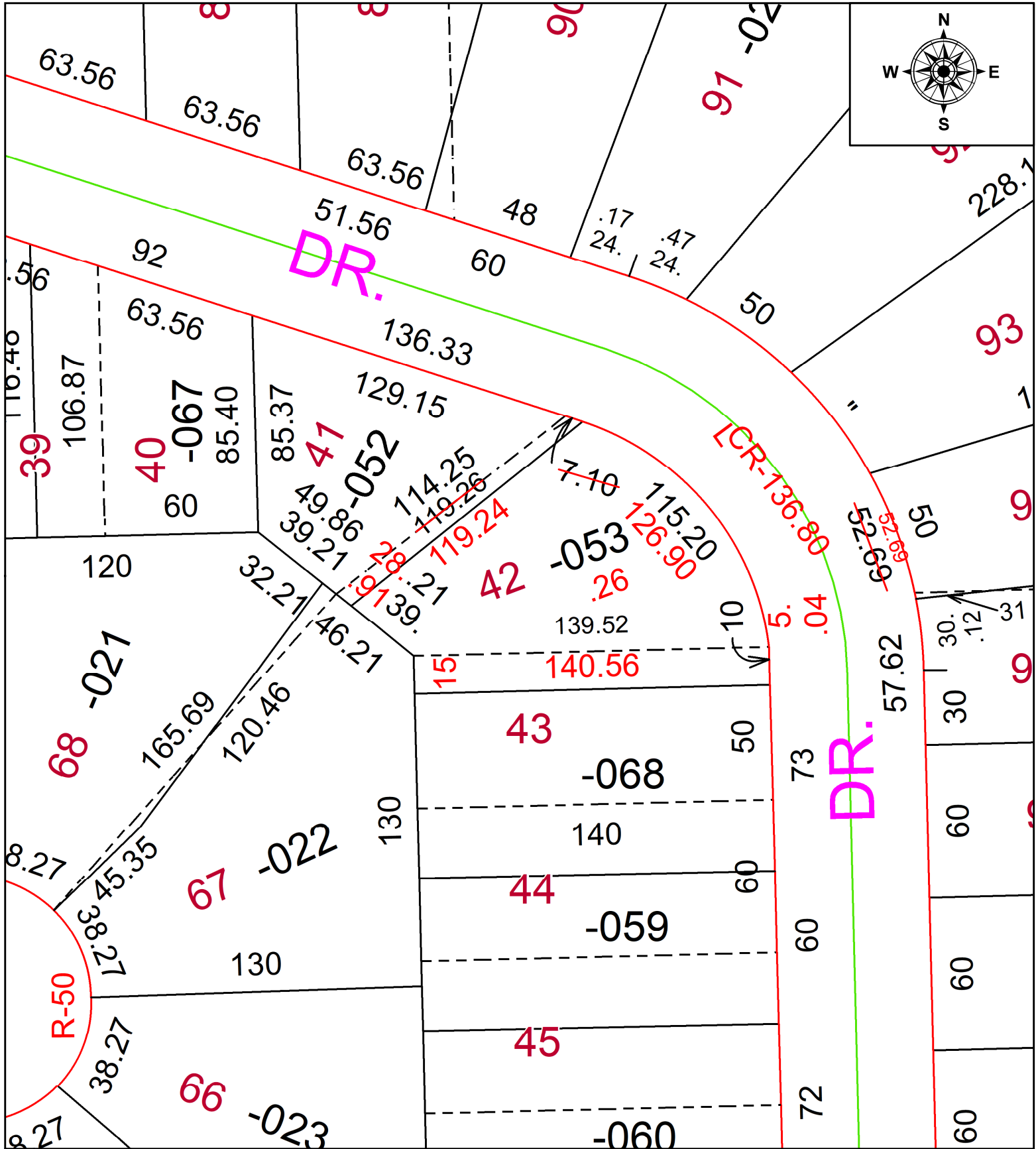


PARENT PARCEL: 06-25-029-103-053

CHILD PARCEL: FRONT & DEPTH TO AC PER SURV BY THOMAS A. SIMON

24-05412-C

STARTING POINT: NW CORNER OF S/L 43



**SPLITS/DEEDS PROCESSED**  
 LORAIN COUNTY TAX MAP DEPARTMENT  
 226 MIDDLE AVE. ELYRIA, OH

SURVEYED BY: THOMAS A. SIMON SURV # 51335  
 CLOSURE: 1: 72852  
 MAP PAGE(S): 06-25  
 APPROVED BY: AC DATE: December 03, 2024  
 SCALE: 1 in = 50 ft PRIOR INSTRUMENT: 2002- 0844007