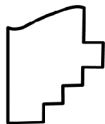
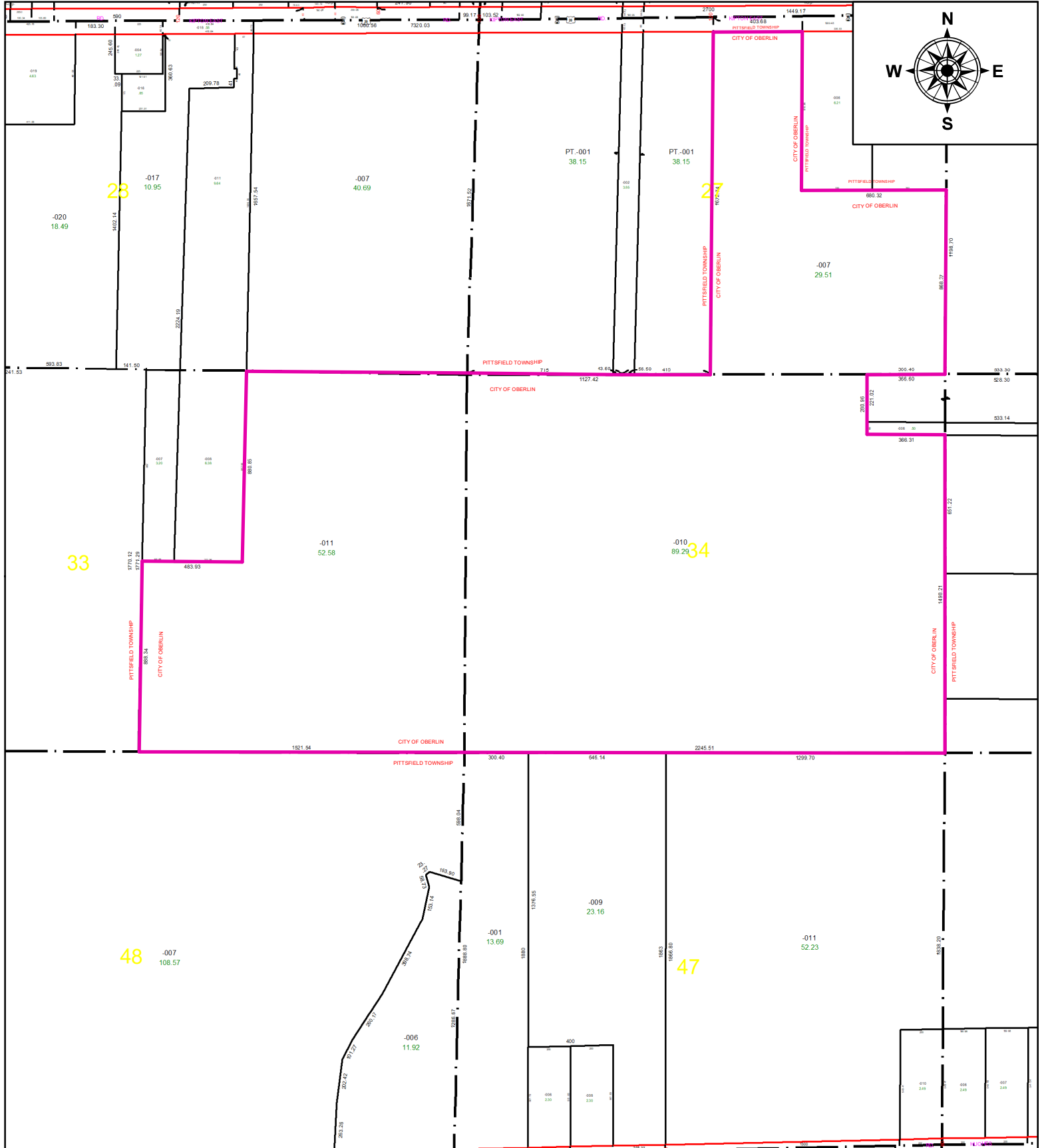


PARENT PARCEL: 14-00-033-000-011 & 14-00-034-000-010
CHILD PARCEL: ANNEXATION RES. # 24-698 ORD. # 24-42 AC CMS
STARTING POINT: NA

24-05410-X



SPLITS/DEEDS PROCESSED
LORAIN COUNTY TAX MAP DEPARTMENT
226 MIDDLE AVE. ELYRIA, OH

SURVEYED BY: T. HOZALSKI
CLOSURE: 1: INF
MAP PAGE(S): 14-00-033 & -034
APPROVED BY: TJS DATE: 11/1/2024
SCALE: 1" = 600' PRIOR INSTRUMENT: NA