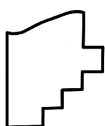
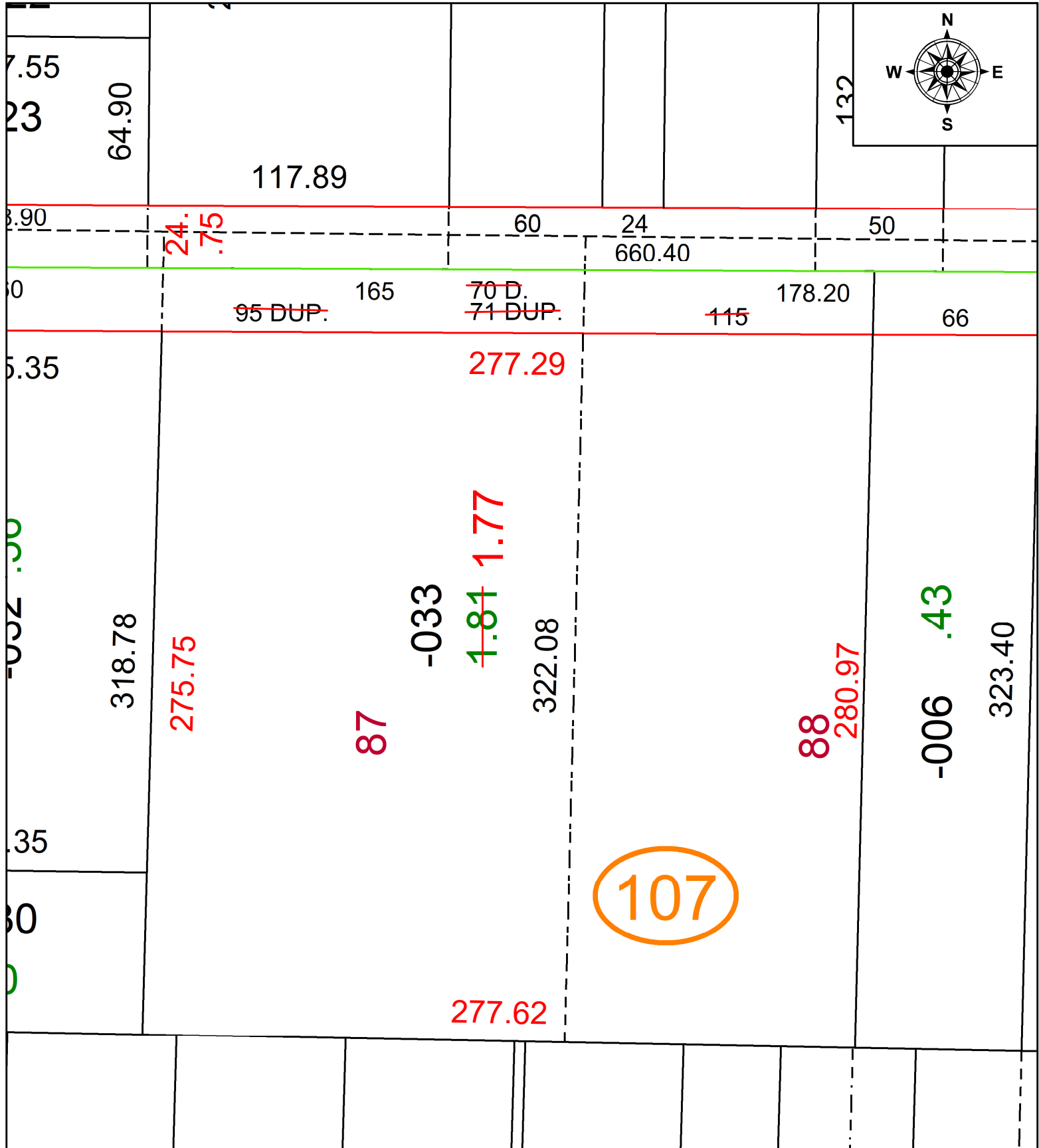


PARENT PARCEL: 09-00-086-107-033

CHILD PARCEL: AC CORR PER SURV BY RICHARD A. FREDRICKSON

STARTING POINT: S LINE OF E VINE AND W LINE OF SOUTH PARK ST

24-05407-A



SPLITS/DEEDS PROCESSED
 LORAIN COUNTY TAX MAP DEPARTMENT
 226 MIDDLE AVE. ELYRIA, OH

SURVEYED BY: RICHARD A. FREDRICKSON SURV # 51330

CLOSURE: 1: 179136

MAP PAGE(S): 09-00-086

APPROVED BY: AC DATE: November 27, 2024

SCALE: 1 in = 50 ft PRIOR INSTRUMENT: 2012- 0412149