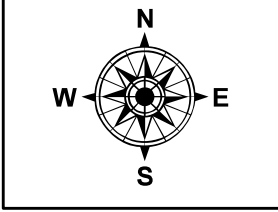
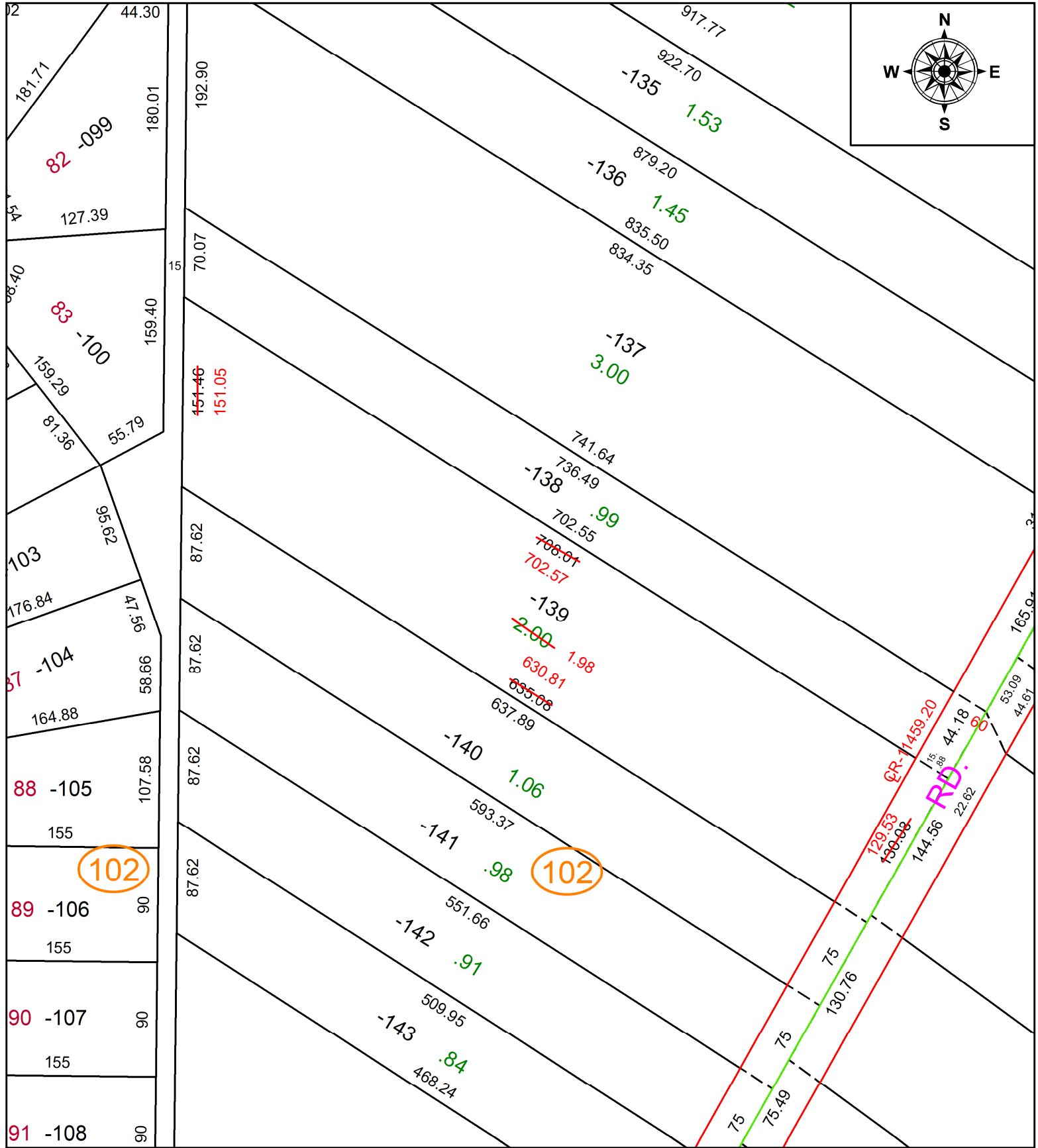


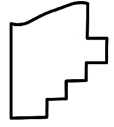
PARENT PARCEL: 07-00-006-102-139

CHILD PARCEL: **AC CORR PER SURV BY ROBERT M. RUFFING**

24-05401-C

STARTING POINT: C/L OF N BARTON ST AND ENGLEWOOD CT



 **SPLITS/DEEDS PROCESSED**  
 LORAIN COUNTY TAX MAP DEPARTMENT  
 226 MIDDLE AVE. ELYRIA, OH

**SURVEYED BY:** ROBERT M. RUFFING **SURV # 51325**  
**CLOSURE:** 1: 281177  
**MAP PAGE(S):** 07-00-006  
**APPROVED BY:** AC **DATE:** November 13, 2024  
**SCALE:** 1 in = 100 ft **PRIOR INSTRUMENT:** 2023- 0938374