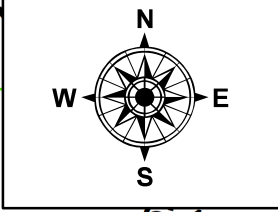
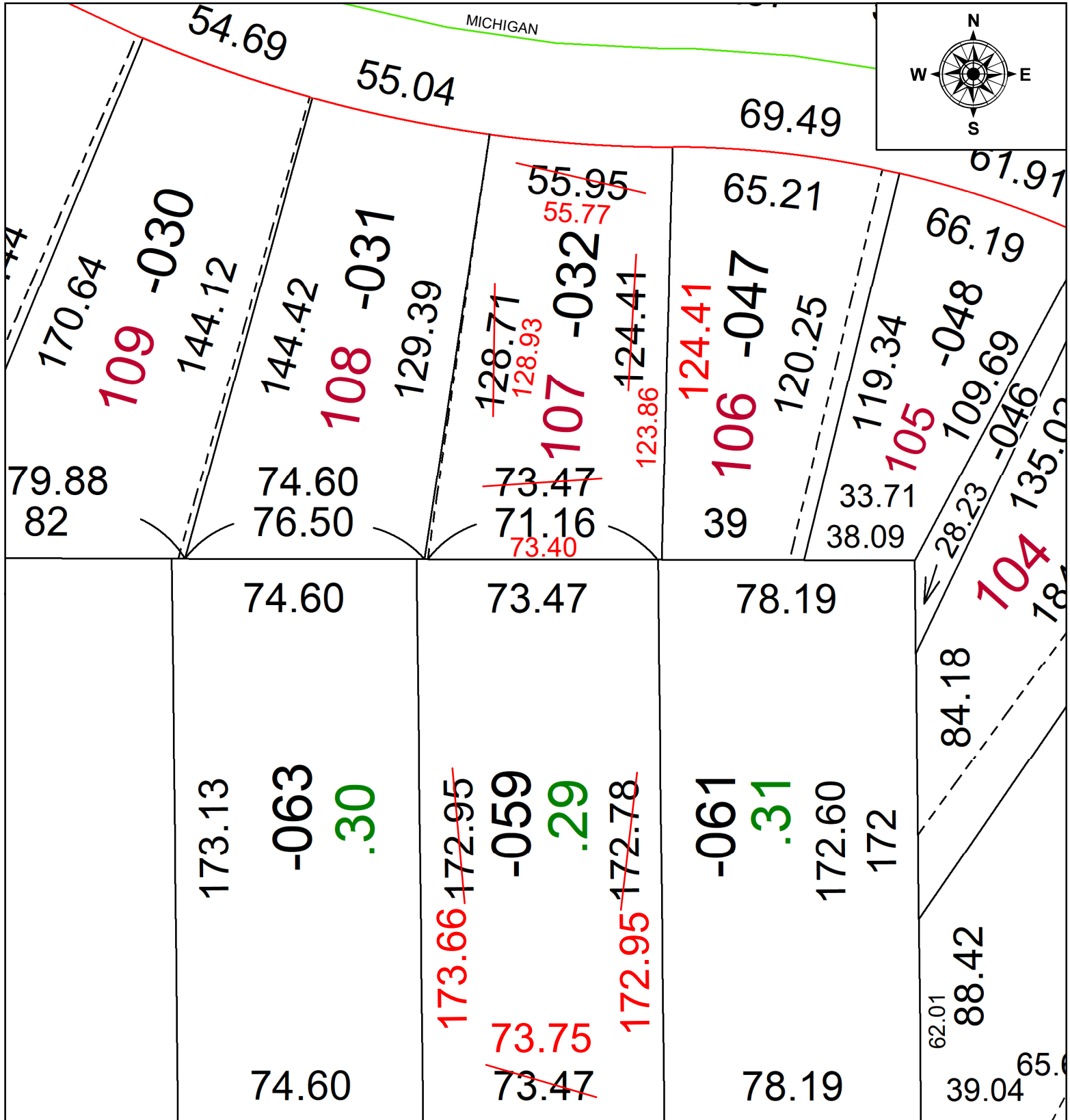


PARENT PARCEL: 06-25-003-103-059, & -032

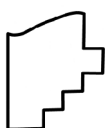
CHILD PARCEL: MAP CORRECTION ONLY

STARTING POINT: SOUTHWEST CORNER OF SUBLot 107 IN SUBLot

24-05393-C



29.



SPLITS/DEEDS PROCESSED
 LORAIN COUNTY TAX MAP DEPARTMENT
 226 MIDDLE AVE. ELYRIA, OH

SURVEYED BY: ROBERT M. RUFFING SURVEY #: 51308
 CLOSURE: I:228624
 MAP PAGE(S): 0625003
 APPROVED BY: BB DATE: 10/28/2024
 SCALE: 1" = 40' PRIOR INSTRUMENT: #20200776805