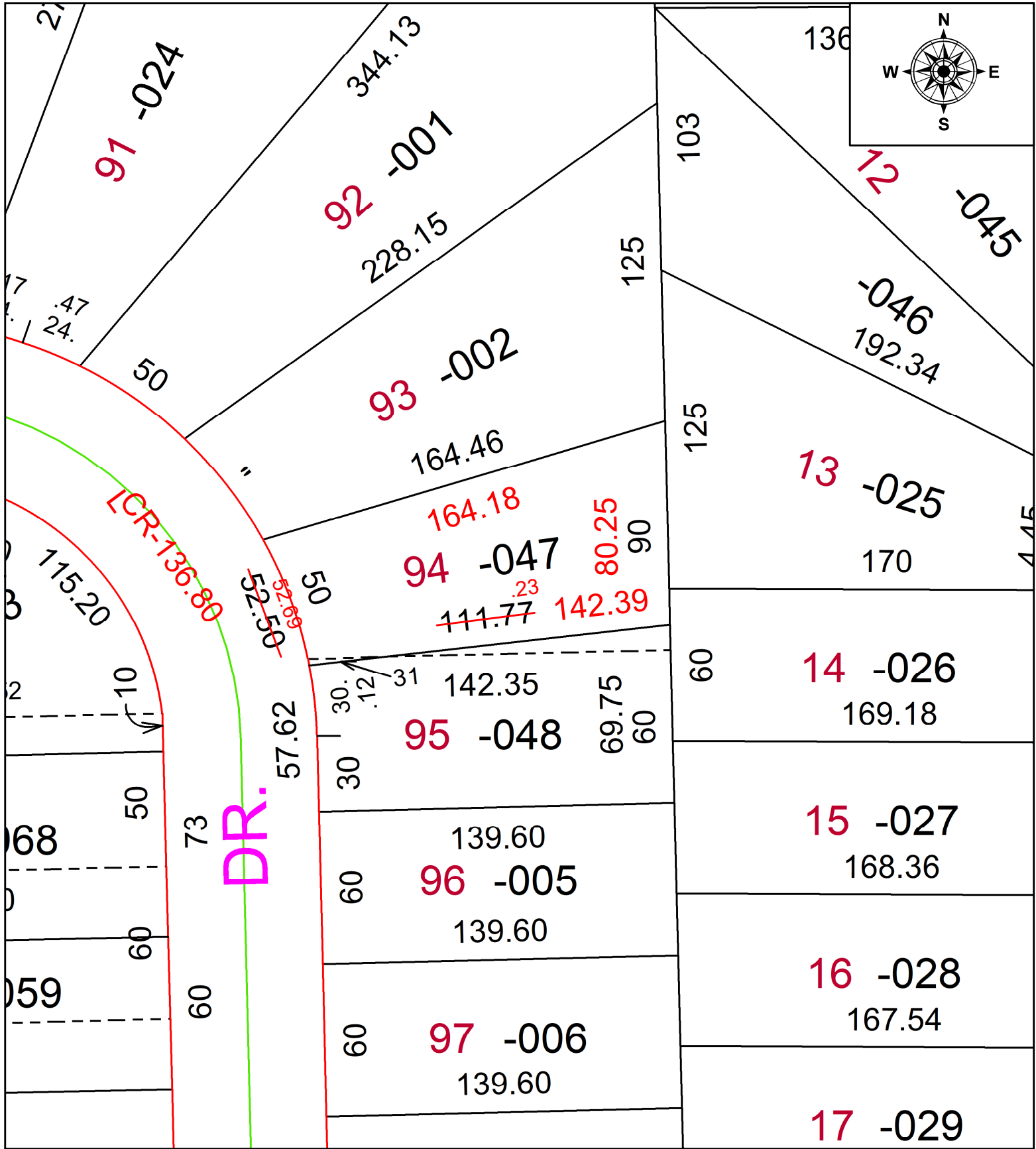


PARENT PARCEL: 06-25-029-104-047

CHILD PARCEL:

24-05383-C

STARTING POINT: FRONT & DEPTH TO AC CORR PER SURV BY THOMAS A. SIMON



SPLITS/DEEDS PROCESSED
 LORAIN COUNTY TAX MAP DEPARTMENT
 226 MIDDLE AVE. ELYRIA, OH

SURVEYED BY: THOMAS A. SIMON SURV # 51298
 CLOSURE: 1: 62802
 MAP PAGE(S): 06-25
 APPROVED BY: AC DATE: October 08, 2024
 SCALE: 1 in = 50 ft PRIOR INSTRUMENT: 2021- 0852902