

PARENT PARCEL:

06-24-037-103-010

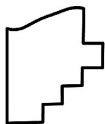
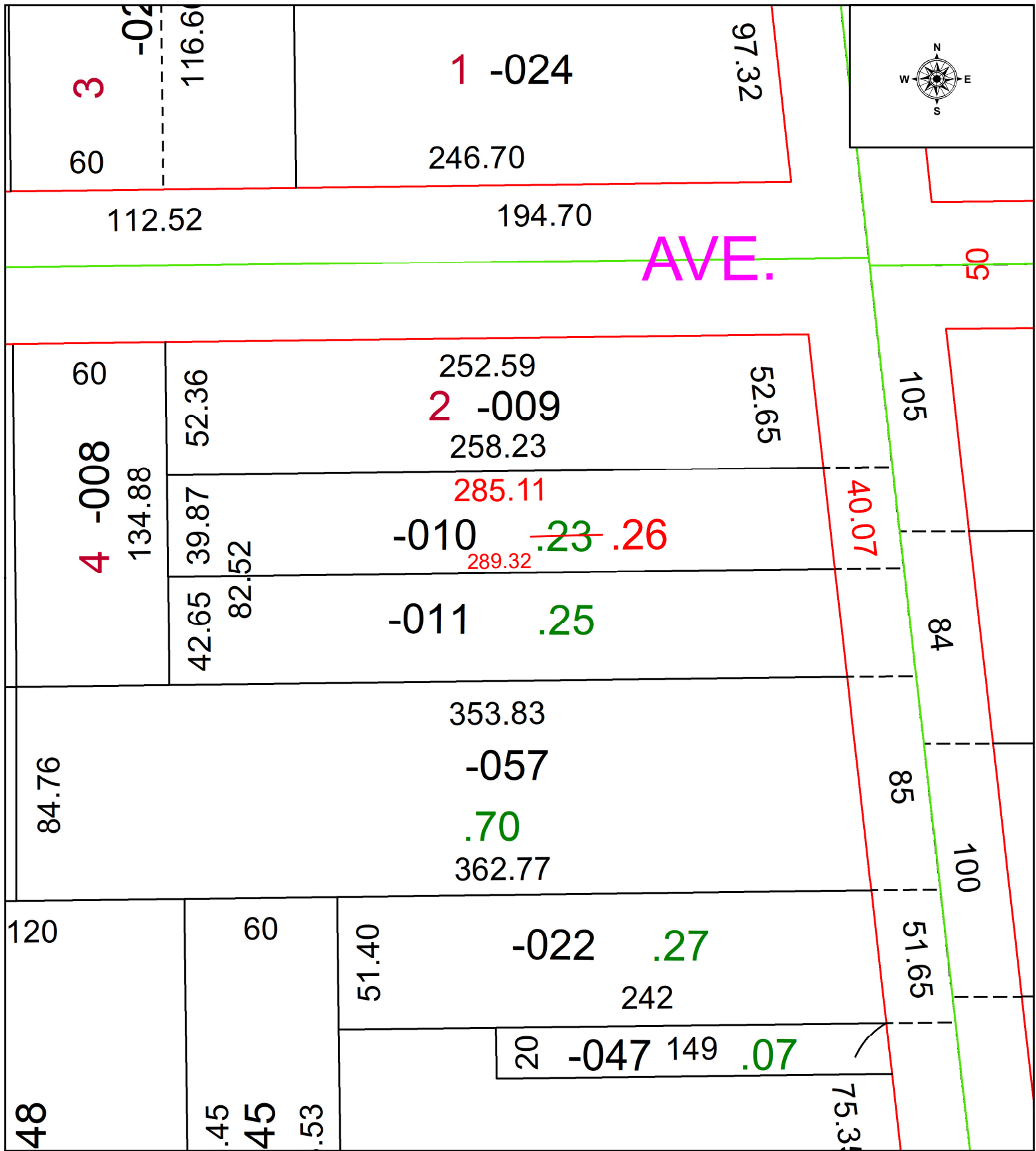
AC CORR PER SURVEYOR SEAN BOLAND

CHILD PARCEL:

24-05374-C

STARTING POINT:

INTERSECTION OF C/LS LAKE AVE & RAMBLER AVE



SPLITS/DEEDS PROCESSED
 LORAIN COUNTY TAX MAP DEPARTMENT
 226 MIDDLE AVE. ELYRIA, OH

SURVEYED BY: SEAN BOLAND SURVEY # 51284
 CLOSURE: 1: 1304252
 MAP PAGE(S): 06-24-037
 APPROVED BY: WRZ DATE: 9/25/2024
 SCALE: 1" = 400 PRIOR INSTRUMENT: #2013-0487125