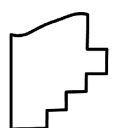
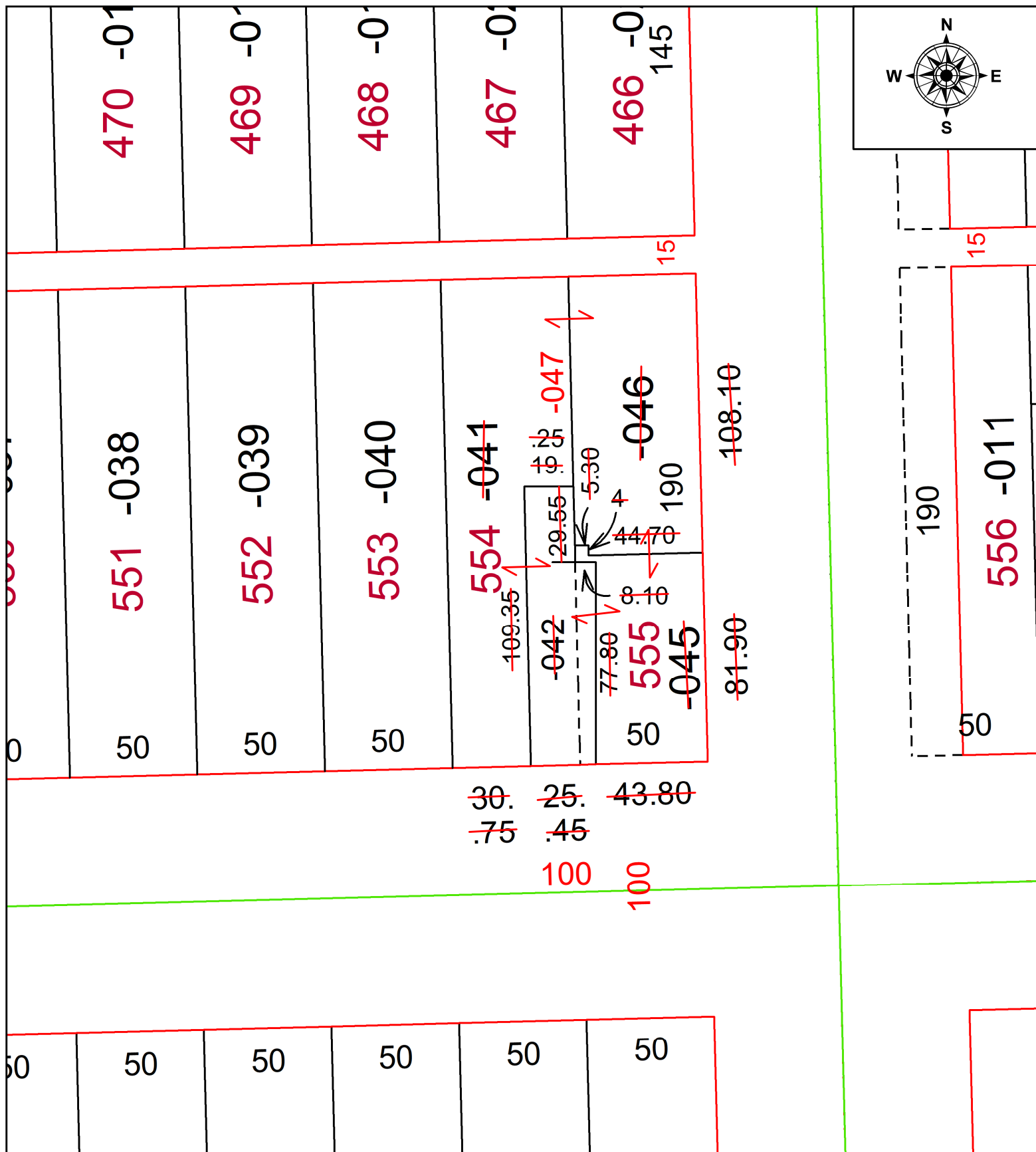


PARENT PARCEL: 03-00-095-110-041, -042, -045, -046

CHILD PARCEL: 03-00-095-110-047

STARTING POINT: COMBINATION PER DEED

24-05365-C



**SPLITS/DEEDS PROCESSED**  
 LORAIN COUNTY TAX MAP DEPARTMENT  
 226 MIDDLE AVE. ELYRIA, OH

SURVEYED BY: \_\_\_\_\_ N/A SURV # N/A  
 CLOSURE: \_\_\_\_\_ N/A  
 MAP PAGE(S): 03-00-095  
 APPROVED BY: AC DATE: September 13, 2024  
 SCALE: 1 in = 50 ft PRIOR INSTRUMENT: 2015- 0553514