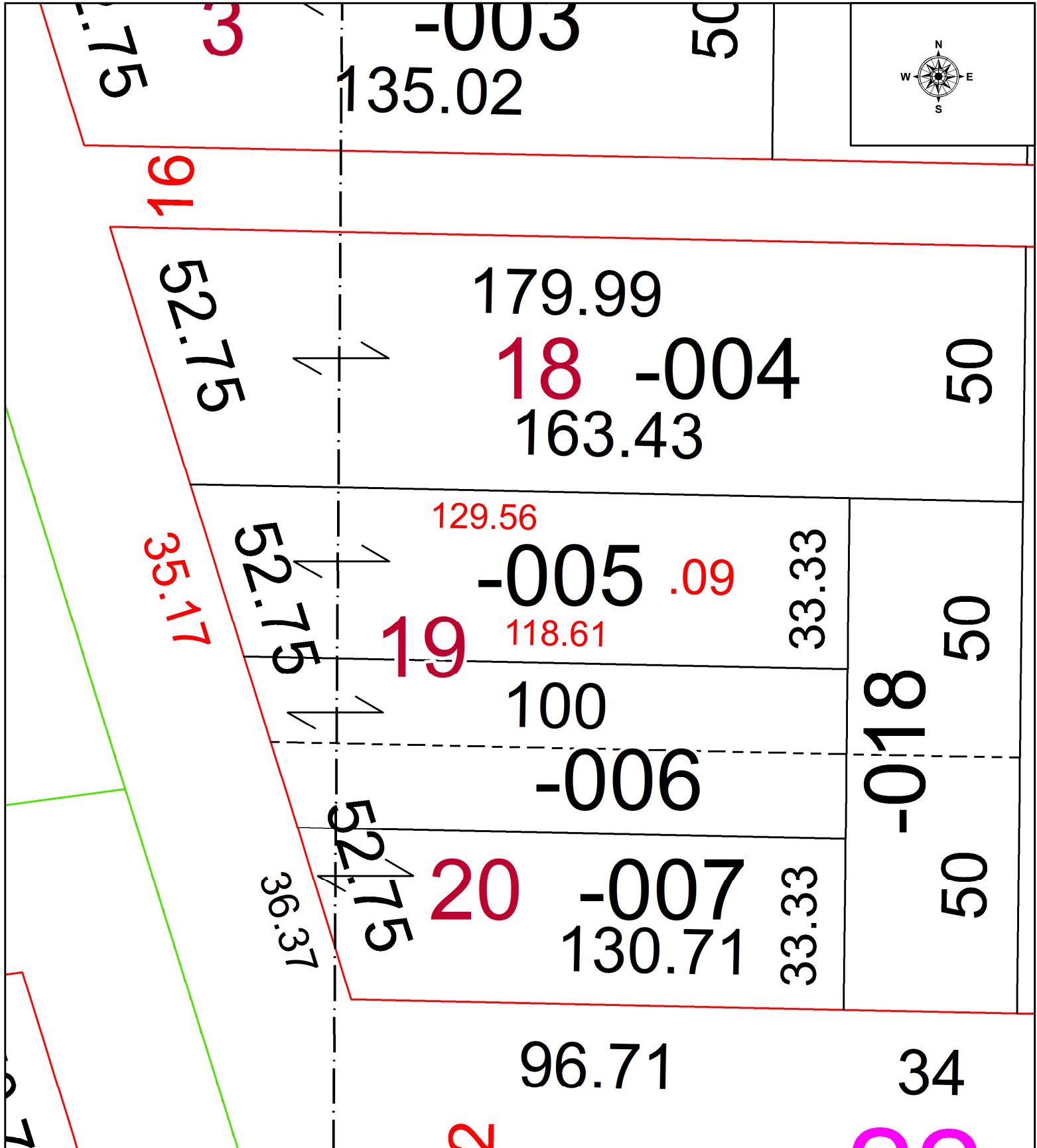


PARENT PARCEL: 02-00-093-105-005

CHILD PARCEL: FR & DPTH TO AC CORR PER SURVEYOR WILLIAM WALLACE

STARTING POINT: INTERSECTION OF NORTH LINE OF E. 22ND ST & EAST LINE OF ELYRIA AVE

24-05355-C



**SPLITS/DEEDS PROCESSED**  
 LORAIN COUNTY TAX MAP DEPARTMENT  
 226 MIDDLE AVE. ELYRIA, OH

SURVEYED BY: WILLIAM WALLACE SURVEY # 51257  
 CLOSURE: 1: 83604  
 MAP PAGE(S): 02-00-093  
 APPROVED BY: WRZ DATE: 8/27/2024  
 SCALE: 1" = 25' PRIOR INSTRUMENT: #2018-0694063