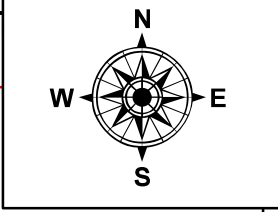
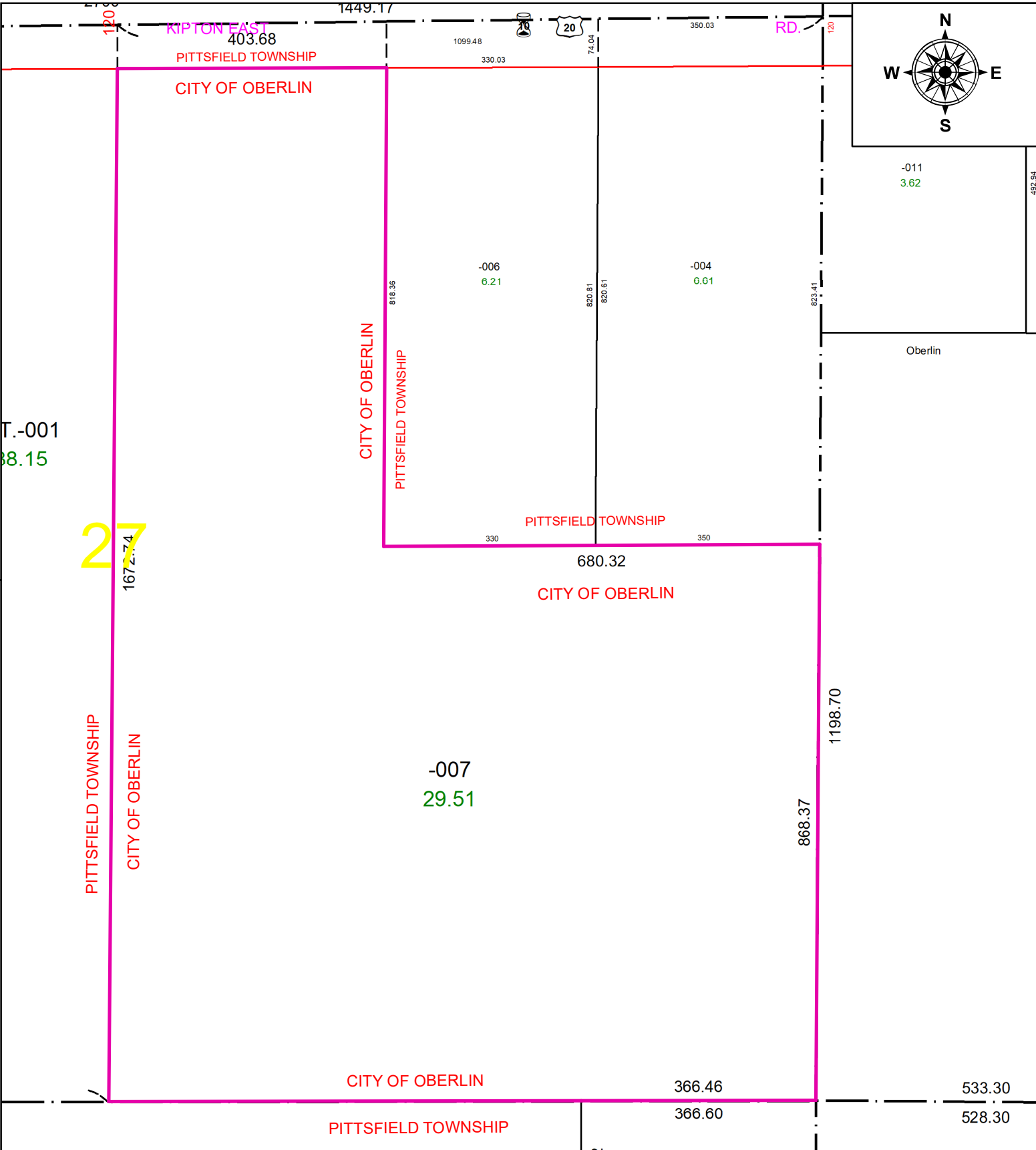
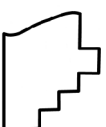


PARENT PARCEL: ANNEXATION PER ORD. # 24-41 AC CMS & RES. # 24-169  
 CHILD PARCEL: NA  
 STARTING POINT: 1/2 " I.P. FD. IN THE S.E. CORNER OF O.L. 27

22-04526



 **SPLITS/DEEDS PROCESSED**  
 LORAIN COUNTY TAX MAP DEPARTMENT  
 226 MIDDLE AVE. ELYRIA, OH

SURVEYED BY: TIM HOZALSKI  
 CLOSURE: 1:702484  
 MAP PAGE(S): 14-00-027  
 APPROVED BY: TJS DATE: 8/16/2024  
 SCALE: 1" = 200 PRIOR INSTRUMENT: NA