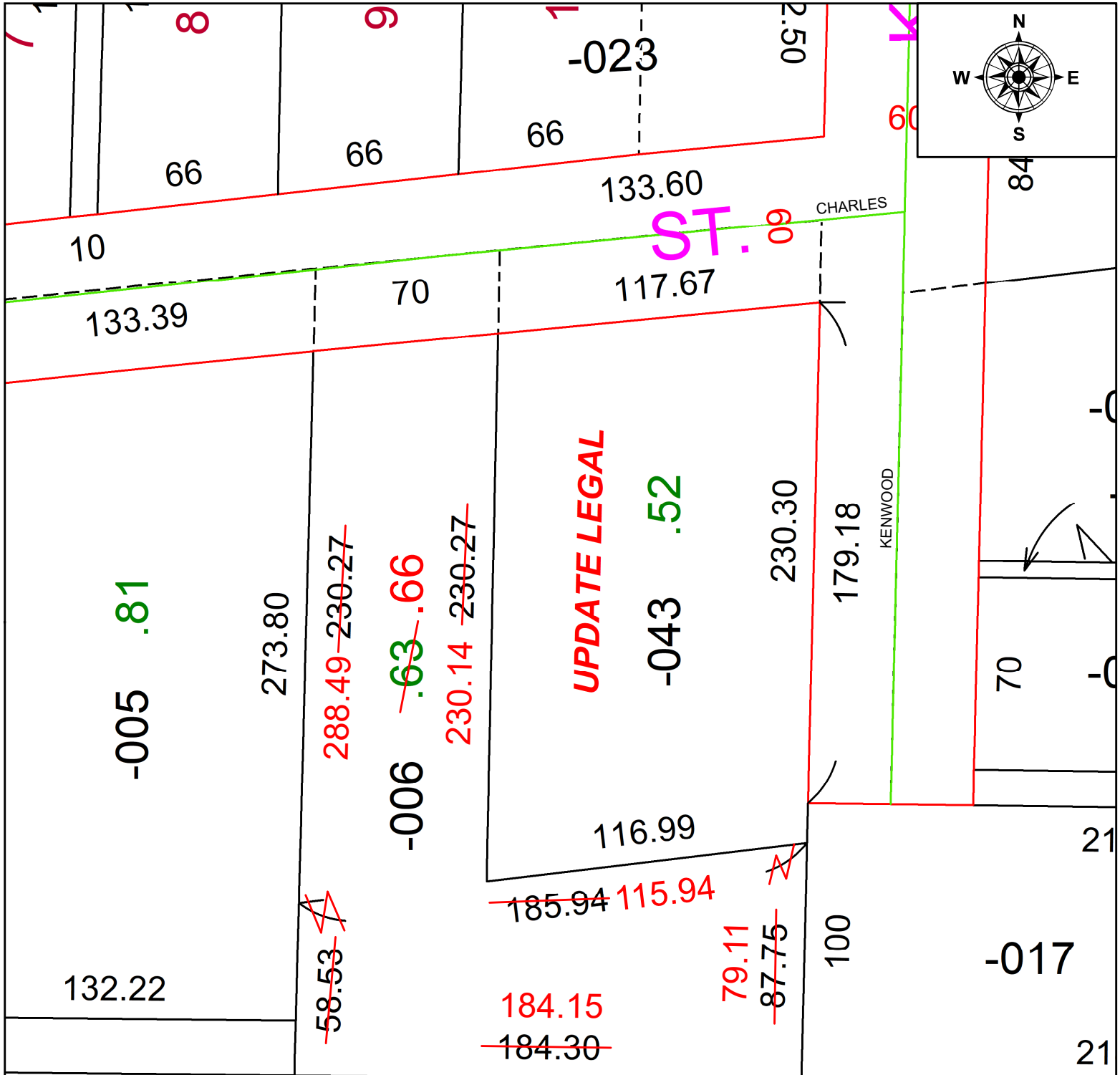


PARENT PARCEL: 05-00-011-105-006

CHILD PARCEL: AC. CORR. PER SURVEY THOMAS SIMON

STARTING POINT: C/L OF KENWOOD ST. & CHARLES ST.

24-05348-C



105



SPLITS/DEEDS PROCESSED
LORAIN COUNTY TAX MAP DEPARTMENT
226 MIDDLE AVE. ELYRIA, OH

SURVEYED BY: THOMAS SIMON	SURVEY #: 51249
CLOSURE: 1:288731	
MAP PAGE(S): 05-00-011	
APPROVED BY: DMA	DATE: 8/12/2024
SCALE: 1" = 50'	PRIOR INSTRUMENT: 2017-0656456