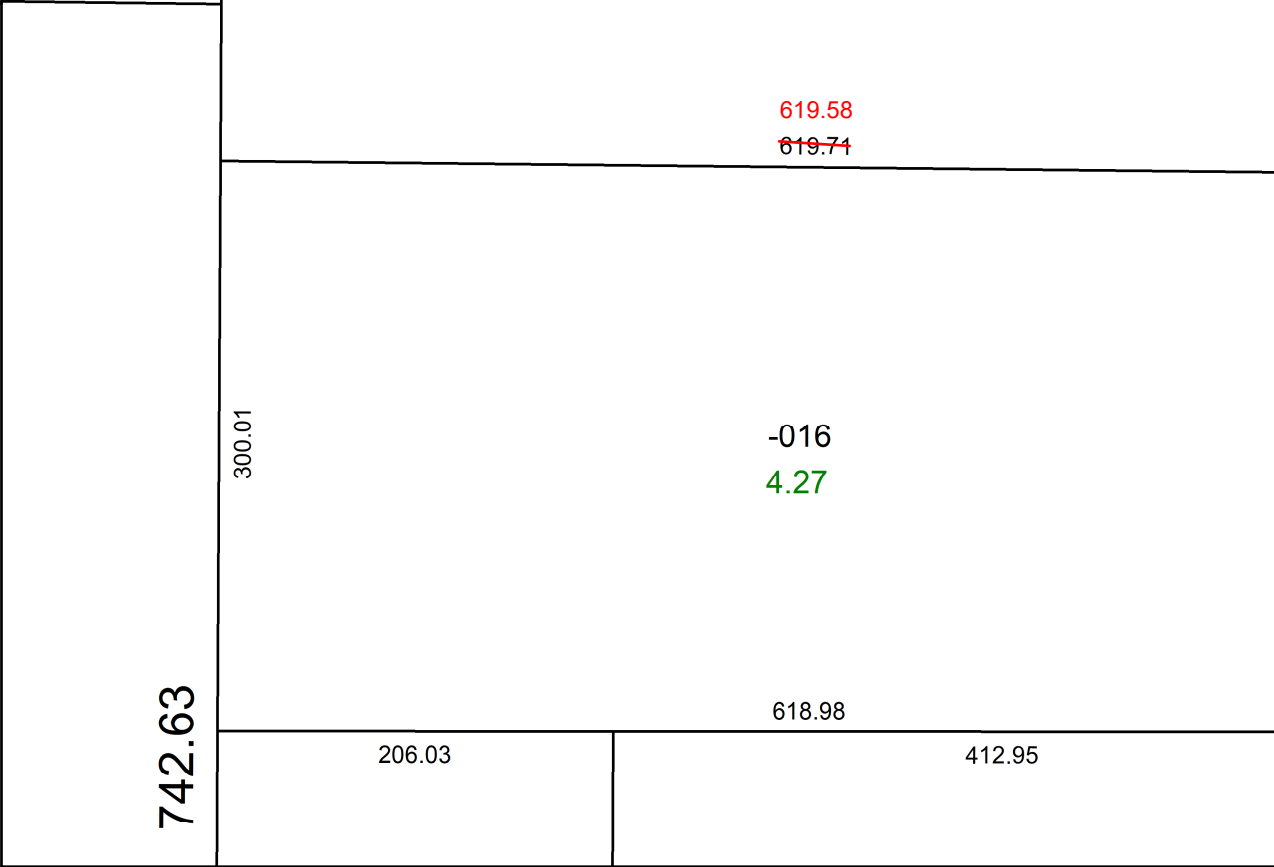
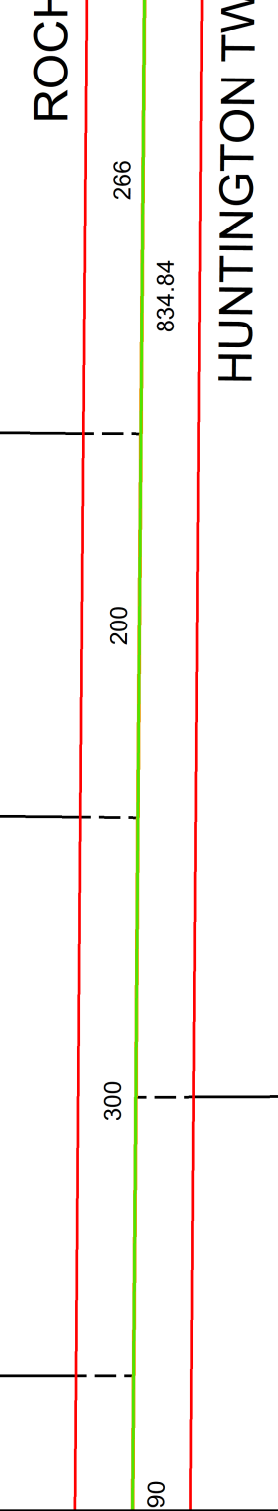
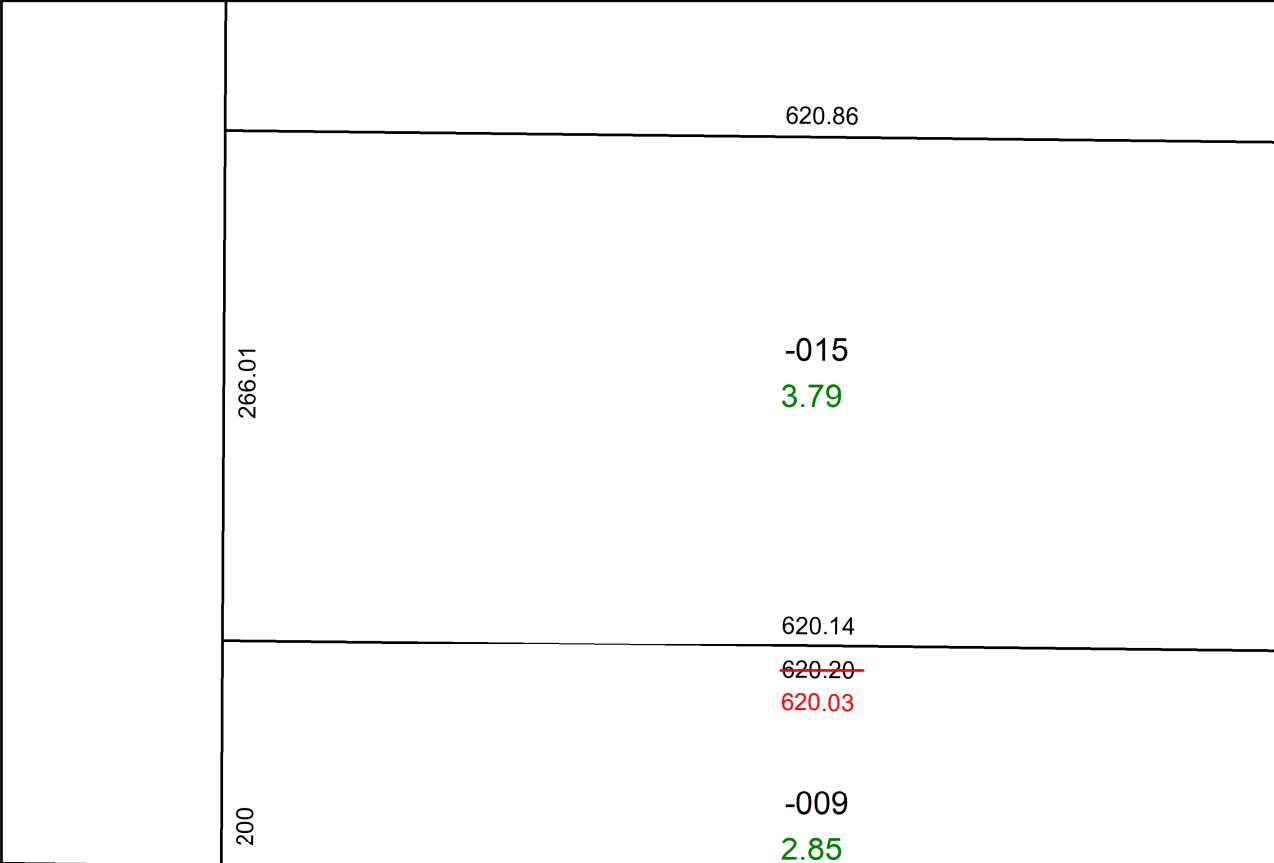
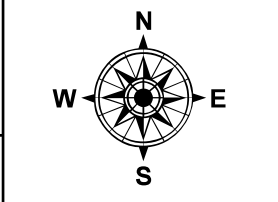


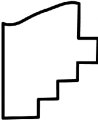
PARENT PARCEL: 20-05-006-000-009

CHILD PARCEL: **MAP CORRECTION ONLY**

STARTING POINT: C/L OF GRIGGS AND QUARRY RD

24-05340-C



 **SPLITS/DEEDS PROCESSED**  
 LORAIN COUNTY TAX MAP DEPARTMENT  
 226 MIDDLE AVE. ELYRIA, OH

**SURVEYED BY:** THOMAS A. SIMON **SURV # 51244**  
**CLOSURE:** 1: 267606  
**MAP PAGE(S):** 20-05-006  
**APPROVED BY:** AC **DATE:** August 01, 2024  
**SCALE:** 1 in = 100 ft **PRIOR INSTRUMENT:** 2022- 0880709