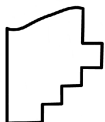
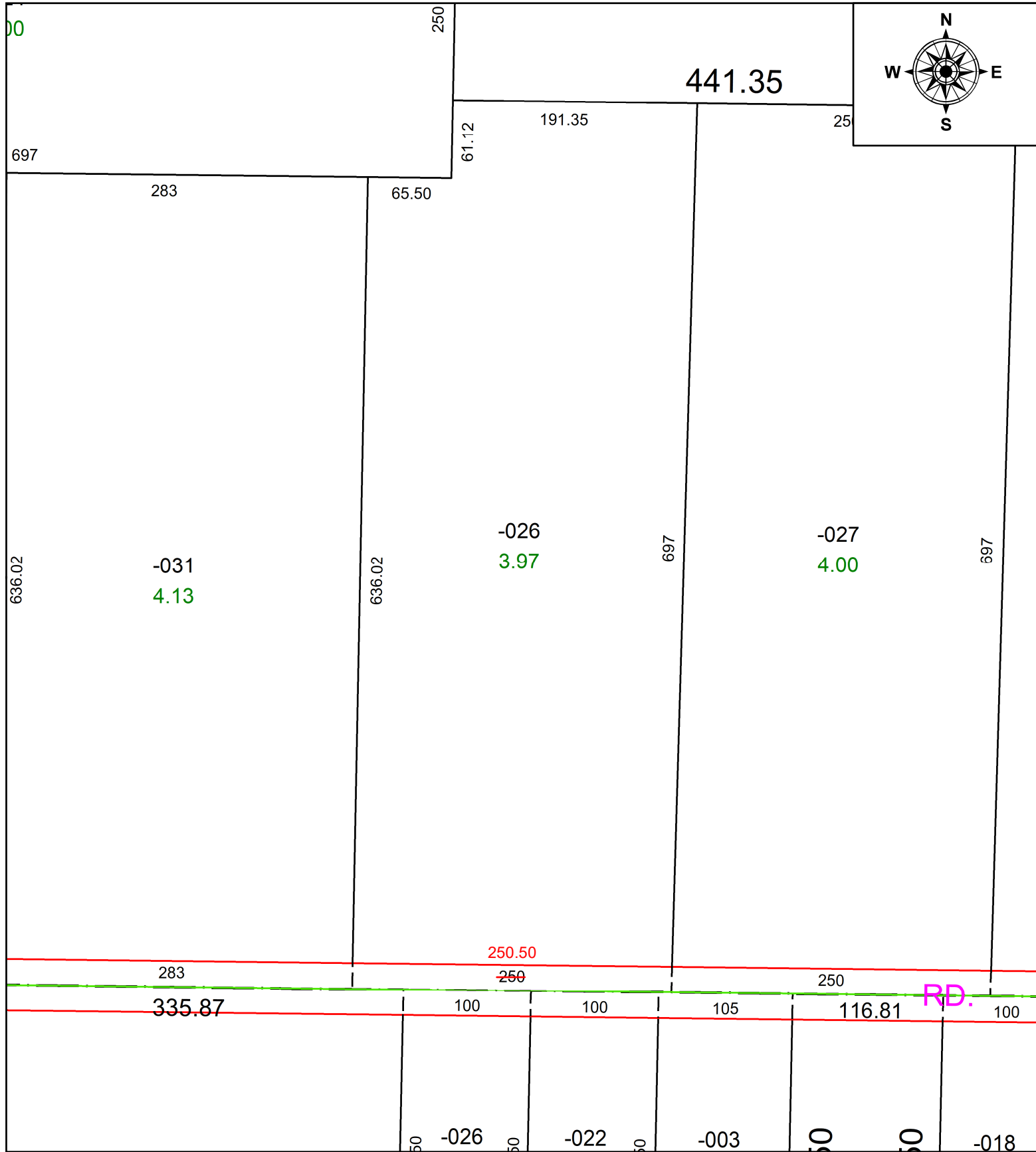


PARENT PARCEL: 12-00-058-000-026

CHILD PARCEL: **MAP CORRECTION ONLY**

STARTING POINT: C/L OF NICHOLS RD AND JACQUAY RD

24-05339-C



SPLITS/DEEDS PROCESSED
 LORAIN COUNTY TAX MAP DEPARTMENT
 226 MIDDLE AVE. ELYRIA, OH

SURVEYED BY: GEORGE A. HOFMANN **SURV # 51243**
CLOSURE: 1: 526135
MAP PAGE(S): 12-00-058
APPROVED BY: AC **DATE:** August 01, 2024
SCALE: 1 in = 100 ft **PRIOR INSTRUMENT:** 2013- 0474532