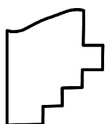
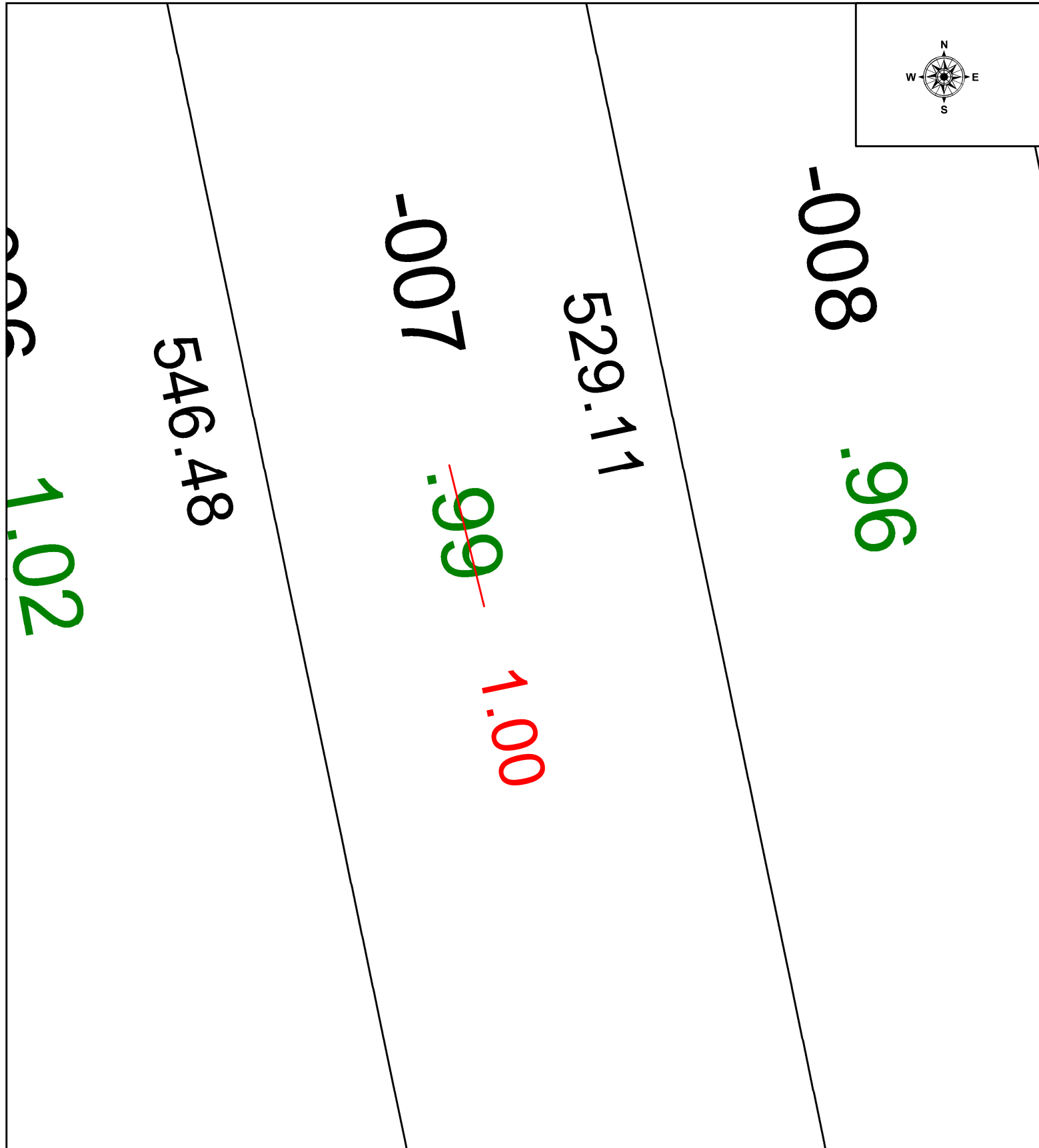
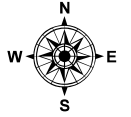


PARENT PARCEL: 07-00-002-101-007

CHILD PARCEL: AC CORR PER PRIOR DEED #2021-0835142

STARTING POINT:

24-05318-C



**SPLITS/DEEDS PROCESSED**  
 LORAIN COUNTY TAX MAP DEPARTMENT  
 226 MIDDLE AVE. ELYRIA, OH

SURVEYED BY: N/A SURVEY #

CLOSURE: 1:

MAP PAGE(S): 07-00-002

APPROVED BY: WRZ DATE: 7/1/2024

SCALE: 1" = 25 PRIOR INSTRUMENT: #2021-0835142