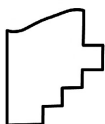
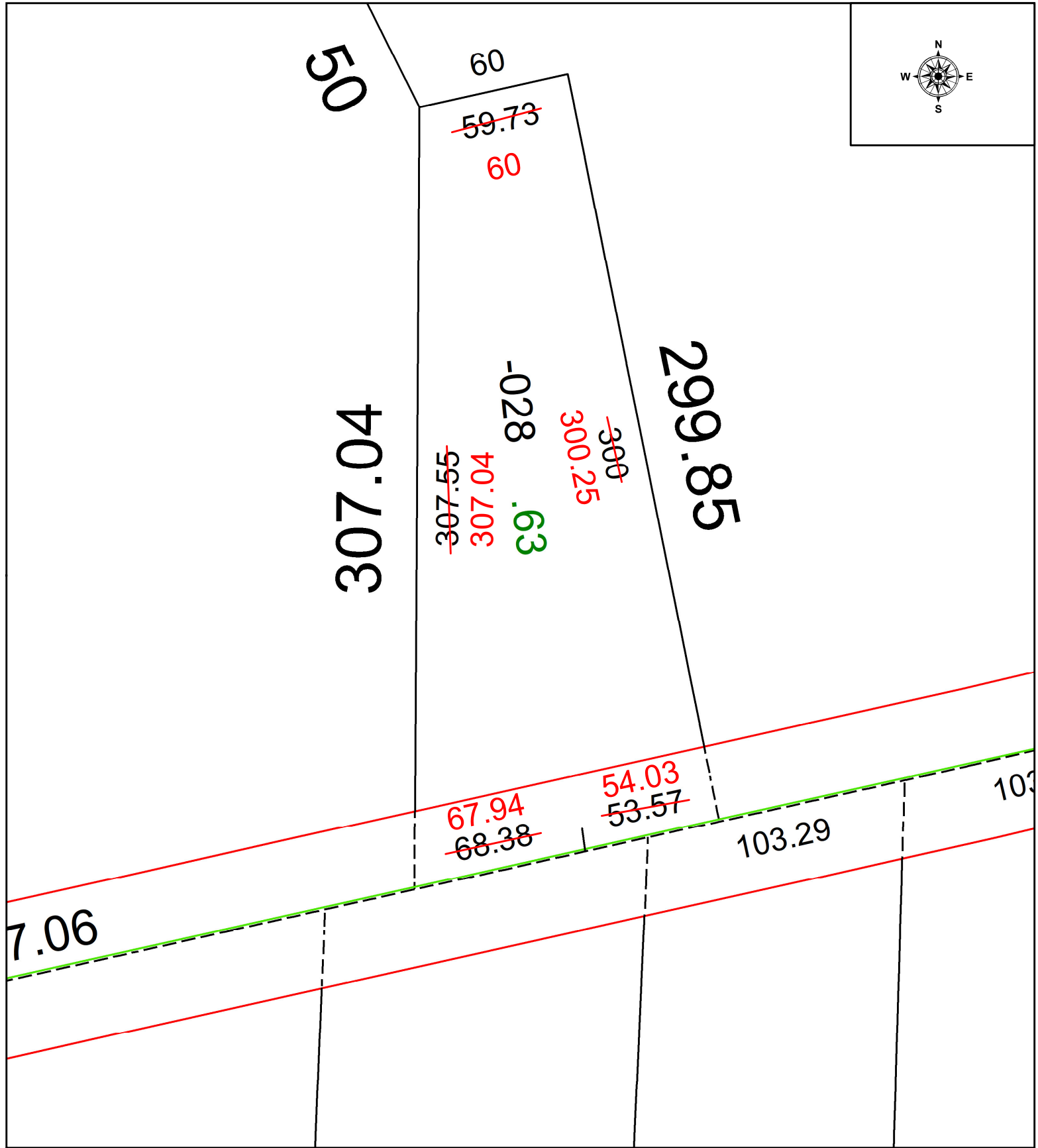
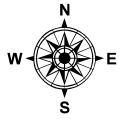


PARENT PARCEL: 07-00-002-101-028

CHILD PARCEL: MAP CORRECTION ONLY

STARTING POINT: INTERSECTION OF C/L OF BAGLEY AND EASTERLY LINE OF LORAIN COUNTY

24-05308-C



**SPLITS/DEEDS PROCESSED**  
LORAIN COUNTY TAX MAP DEPARTMENT  
226 MIDDLE AVE. ELYRIA, OH

SURVEYED BY: THOMAS SIMON SURVEY # 51200  
CLOSURE: 1: 197306  
MAP PAGE(S): 07-00-002  
APPROVED BY: WRZ DATE: 6/5/2024  
SCALE: 1" = 50 PRIOR INSTRUMENT: #2024-0013503