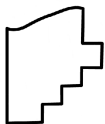
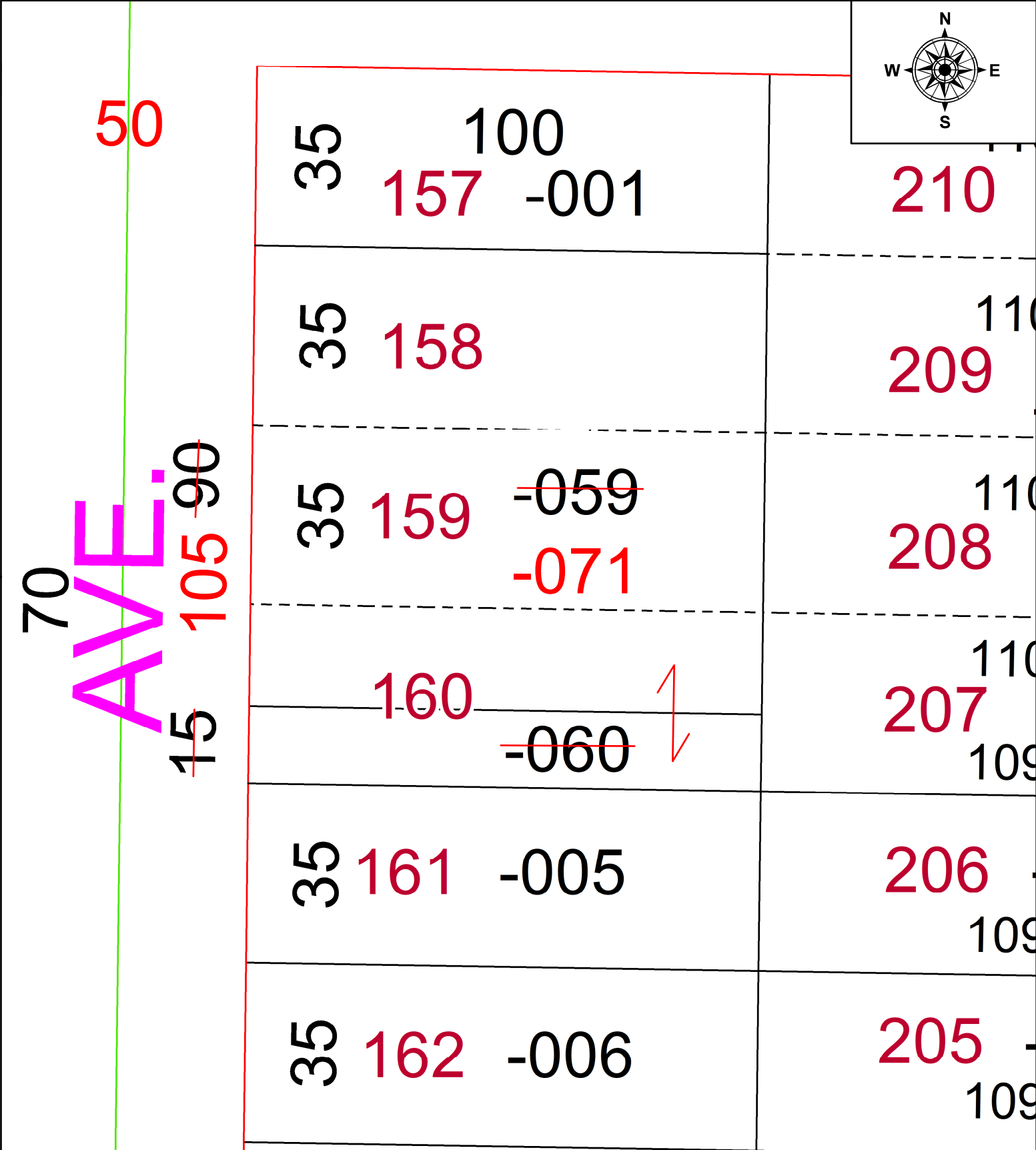
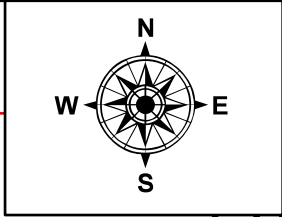


PARENT PARCEL: 03-00-038-115-059 & -060

CHILD PARCEL: 03-00-038-115-071

STARTING POINT: COMBINATION PER PRIOR DEED INSTRUMENT NO. 2021- 0848570

24-05307-C



**SPLITS/DEEDS PROCESSED**  
 LORAIN COUNTY TAX MAP DEPARTMENT  
 226 MIDDLE AVE. ELYRIA, OH

SURVEYED BY: N/A SURV # N/A  
 CLOSURE: N/A  
 MAP PAGE(S): 03-00-038  
 APPROVED BY: AC DATE: June 04, 2024  
 SCALE: 1 in = 25 ft PRIOR INSTRUMENT: 2021- 0848570