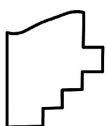
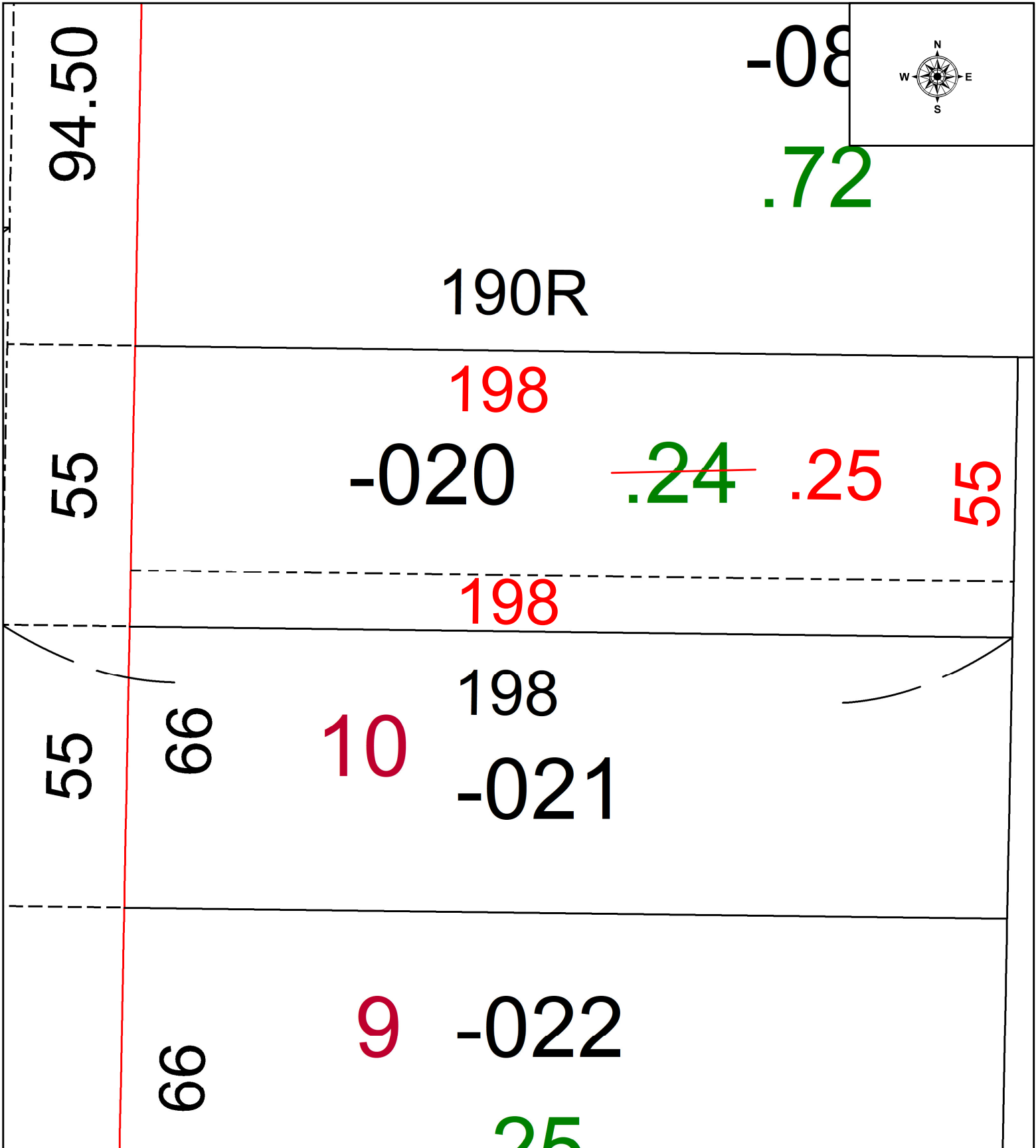


PARENT PARCEL: 09-00-076-103-020

CHILD PARCEL: AC CORR PER SURVEYOR ROBERT RUFFING

STARTING POINT: SOUTHEAST CORNER OF S/L 9 IN HALL & COLE'S ADDITION

24-05296-A



SPLITS/DEEDS PROCESSED
 LORAIN COUNTY TAX MAP DEPARTMENT
 226 MIDDLE AVE. ELYRIA, OH

SURVEYED BY: ROBERT RUFFING SURVEY # 51185
 CLOSURE: 1: INF
 MAP PAGE(S): 09-00-076
 APPROVED BY: WRZ DATE: 5/14/2024
 SCALE: 1" = 25 PRIOR INSTRUMENT: #2014-0517135