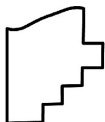
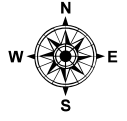
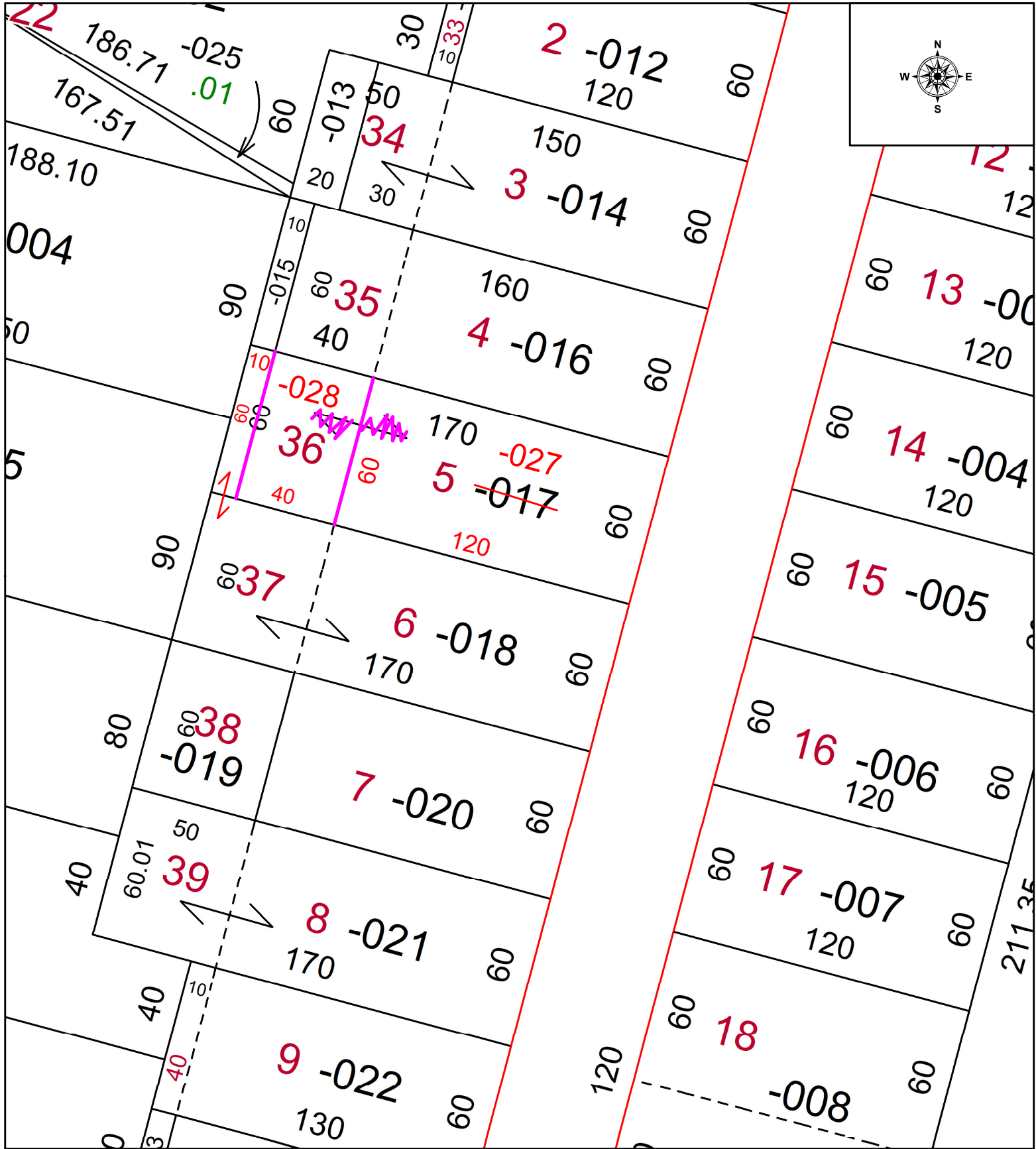


PARENT PARCEL: 05-00-025-102-017 05-00-025-102-018 MAP CORRECTION

CHILD PARCEL: 05-00-025-102-027 & -028 UNCOMBINATION PER PRIOR DEED #2014-0509244

24-05293-U

STARTING POINT:



SPLITS/DEEDS PROCESSED
 LORAIN COUNTY TAX MAP DEPARTMENT
 226 MIDDLE AVE. ELYRIA, OH

SURVEYED BY:	N/A	SURVEY #
CLOSURE:	1:	
MAP PAGE(S):	05-00-025	
APPROVED BY:	WRZ	DATE: 5/8/2024
SCALE:	1" = 50	PRIOR INSTRUMENT: #2014-0509244