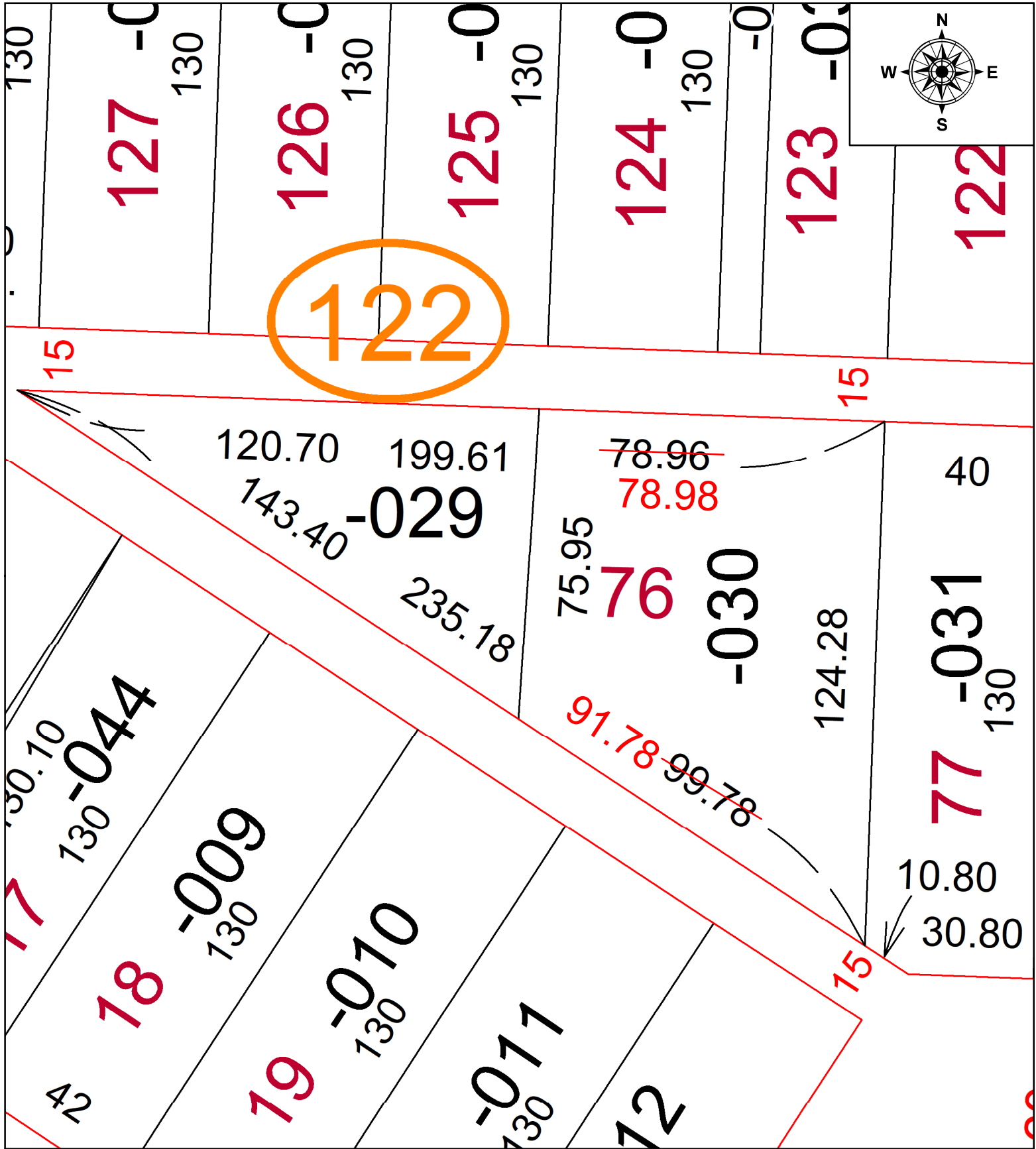


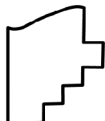
PARENT PARCEL: 03-00-103-122-030

CHILD PARCEL: FRONTAGE & DEPTH CORRECTION

24-05287-C

STARTING POINT: SEE DEED INST. 2001-0739937



 **SPLITS/DEEDS PROCESSED**
 LORAIN COUNTY TAX MAP DEPARTMENT
 226 MIDDLE AVE. ELYRIA, OH

SURVEYED BY: NA
 CLOSURE: NA
 MAP PAGE(S): 3-00-103
 APPROVED BY: TJS DATE: 5/2/2024
 SCALE: 1" = 30' PRIOR INSTRUMENT: 1995-0341864