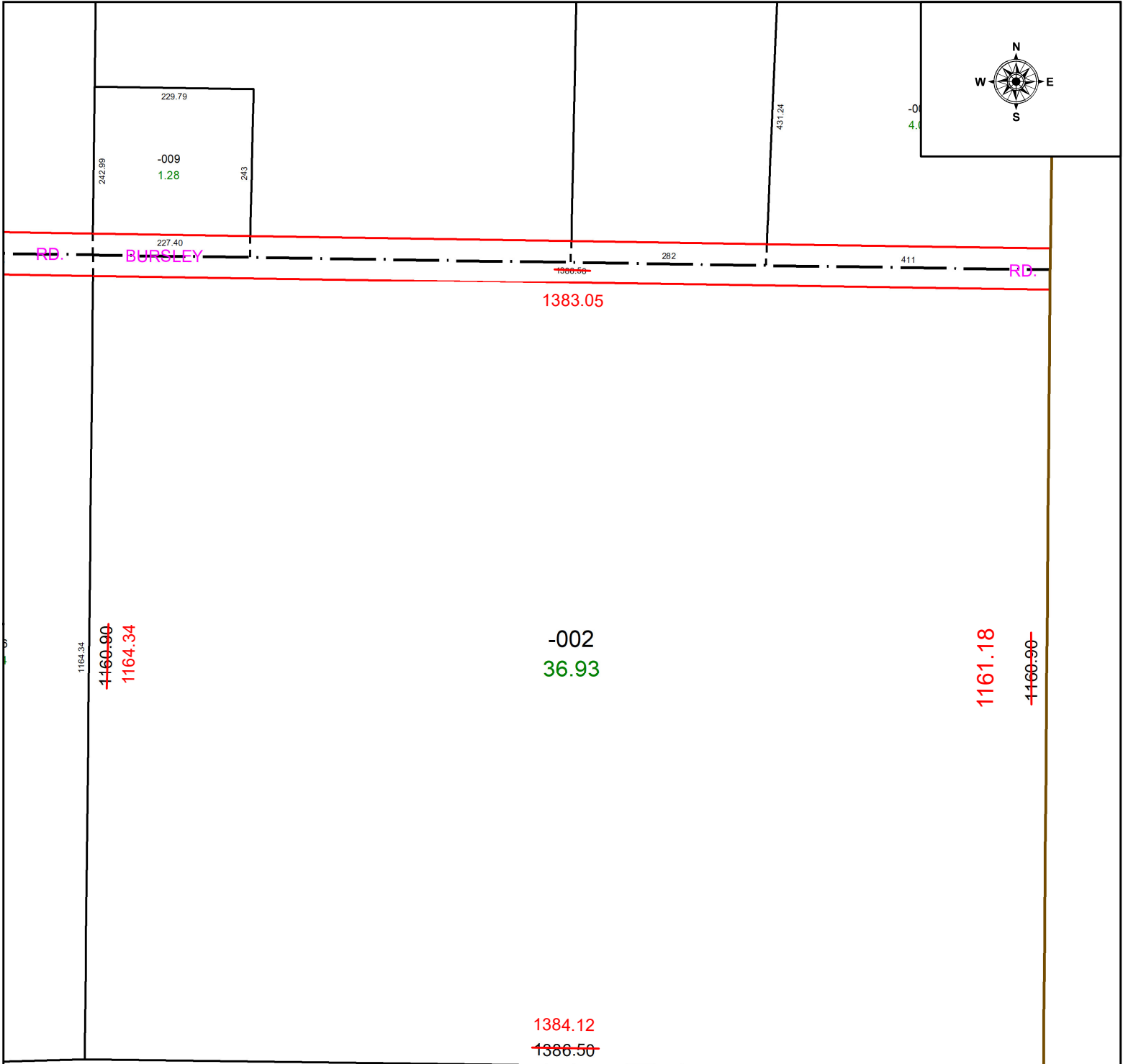


PARENT PARCEL: 21-17-010-000-002

CHILD PARCEL: MAP CORRECTION ONLY

STARTING POINT: INTERSECTION OF C/L BURSLEY RD & EAST LINE LORAIN COUNTY

24-05278-C



SPLITS/DEEDS PROCESSED
 LORAIN COUNTY TAX MAP DEPARTMENT
 226 MIDDLE AVE. ELYRIA, OH

SURVEYED BY: SUSAN EICHHORN SURVEY # 51166
 CLOSURE: 1: 557390
 MAP PAGE(S): 21-17-010
 APPROVED BY: WRZ DATE: 4/17/2024
 SCALE: 1" = 200 PRIOR INSTRUMENT: #2011-0360641