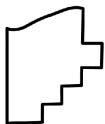
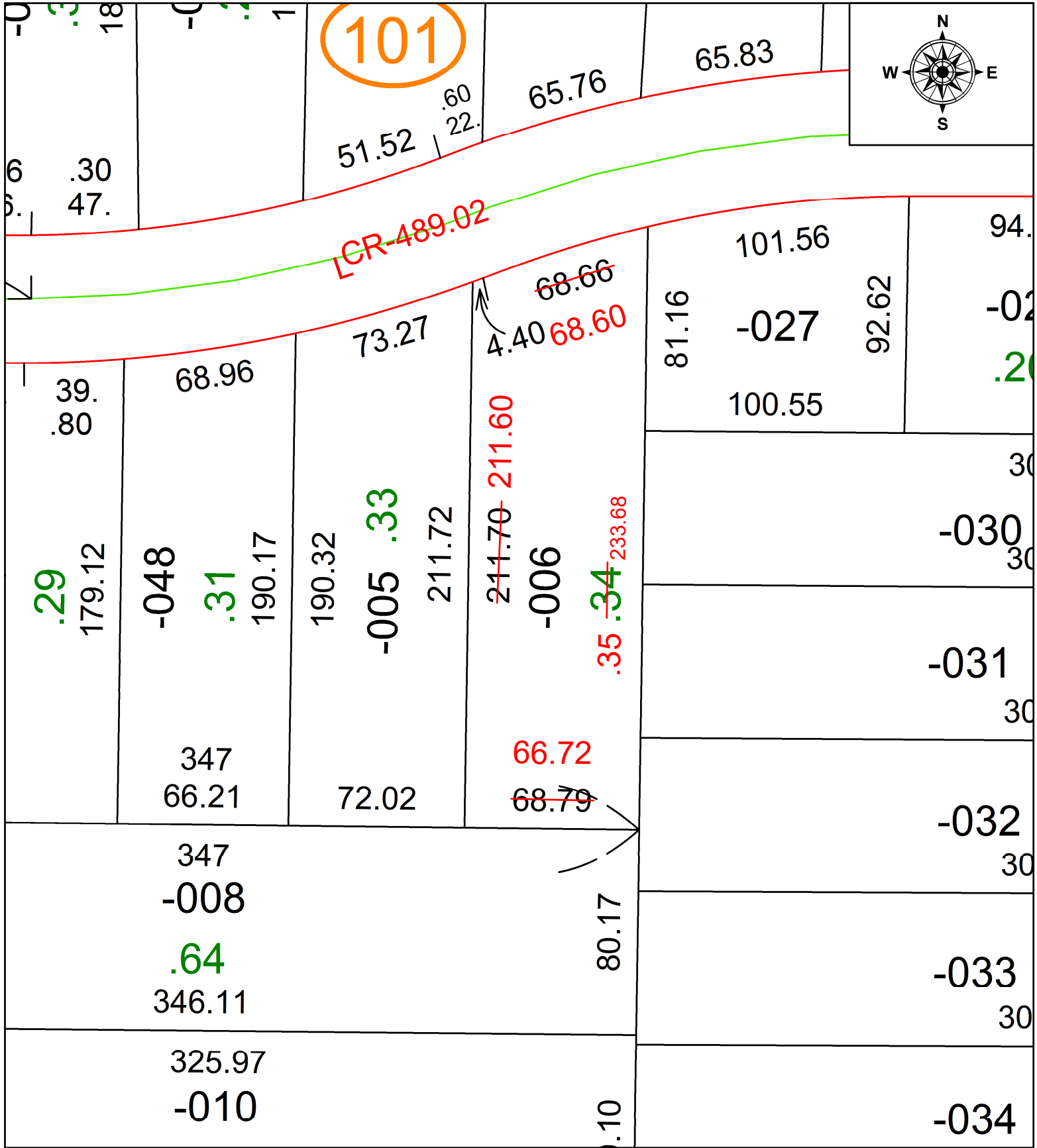


PARENT PARCEL: 05-00-023-103-006

CHILD PARCEL: AC CORR PER SURV BY WILFREDO BARBOSA

24-05274-C

STARTING POINT: S LINE OF SIPPLE AVE AND E LINE OF LINCOLN ST



SPLITS/DEEDS PROCESSED
 LORAIN COUNTY TAX MAP DEPARTMENT
 226 MIDDLE AVE. ELYRIA, OH

SURVEYED BY: WILFREDO BARBOSA SURV # 51163
 CLOSURE: 1: 112411
 MAP PAGE(S): 05-00-023
 APPROVED BY: AC DATE: April 12, 2024
 SCALE: 1 in = 50 ft PRIOR INSTRUMENT: 2019- 0730552