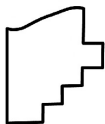
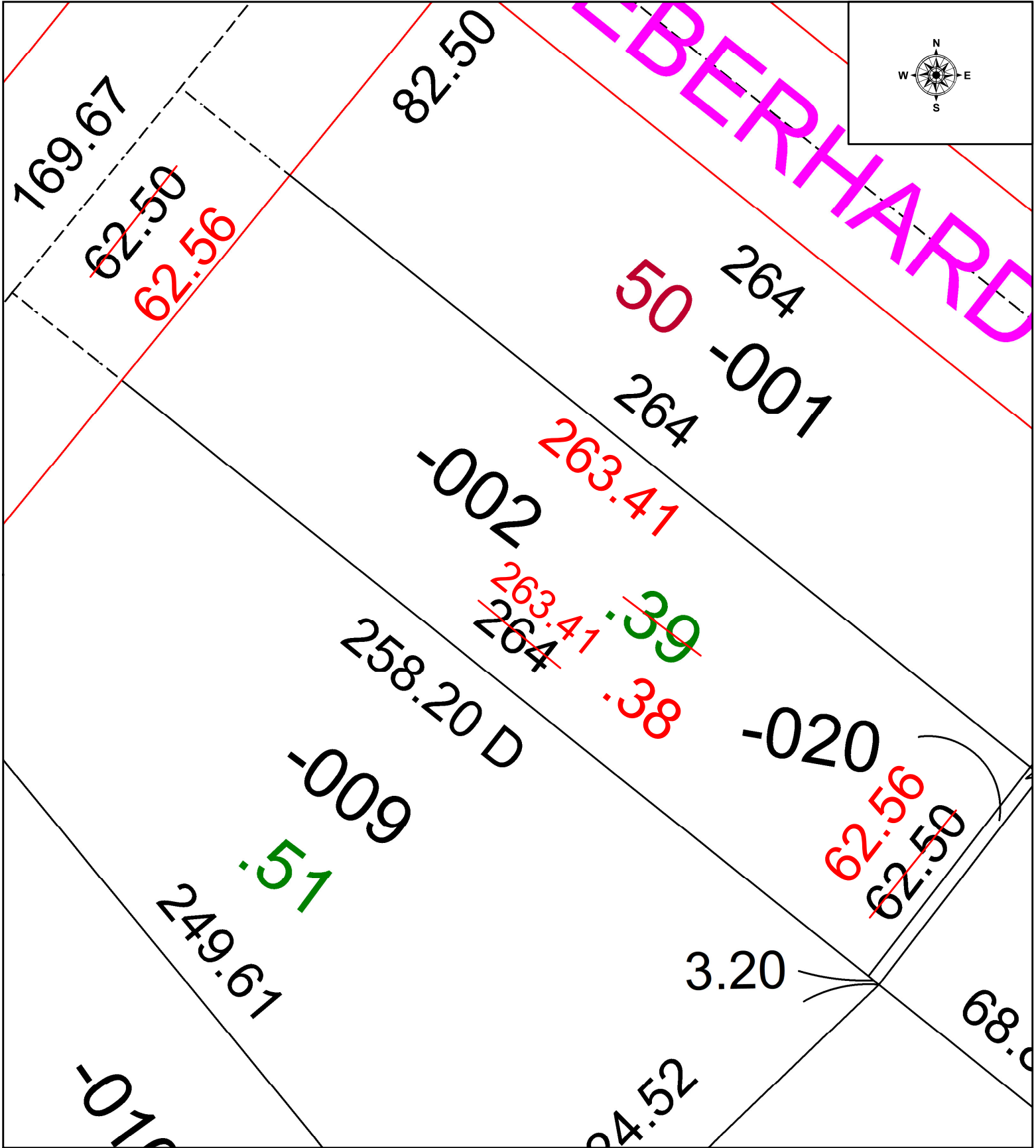


PARENT PARCEL: 05-00-091-105-002  
CHILD PARCEL: AC CORR PER SURVEYOR ROBERT RUFFING  
STARTING POINT: NORTH CORNER OF S/L 51 IN GEO. LUDWIG'S SUBDIVISION NO. 3

24-05273-C



**SPLITS/DEEDS PROCESSED**  
LORAIN COUNTY TAX MAP DEPARTMENT  
226 MIDDLE AVE. ELYRIA, OH

SURVEYED BY: ROBERT RUFFING SURVEY # 51162  
CLOSURE: 1: 429898  
MAP PAGE(S): 05-00-091  
APPROVED BY: WRZ DATE: 4/12/2024  
SCALE: 1" = 30 PRIOR INSTRUMENT: #2017-0623952