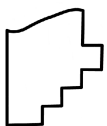
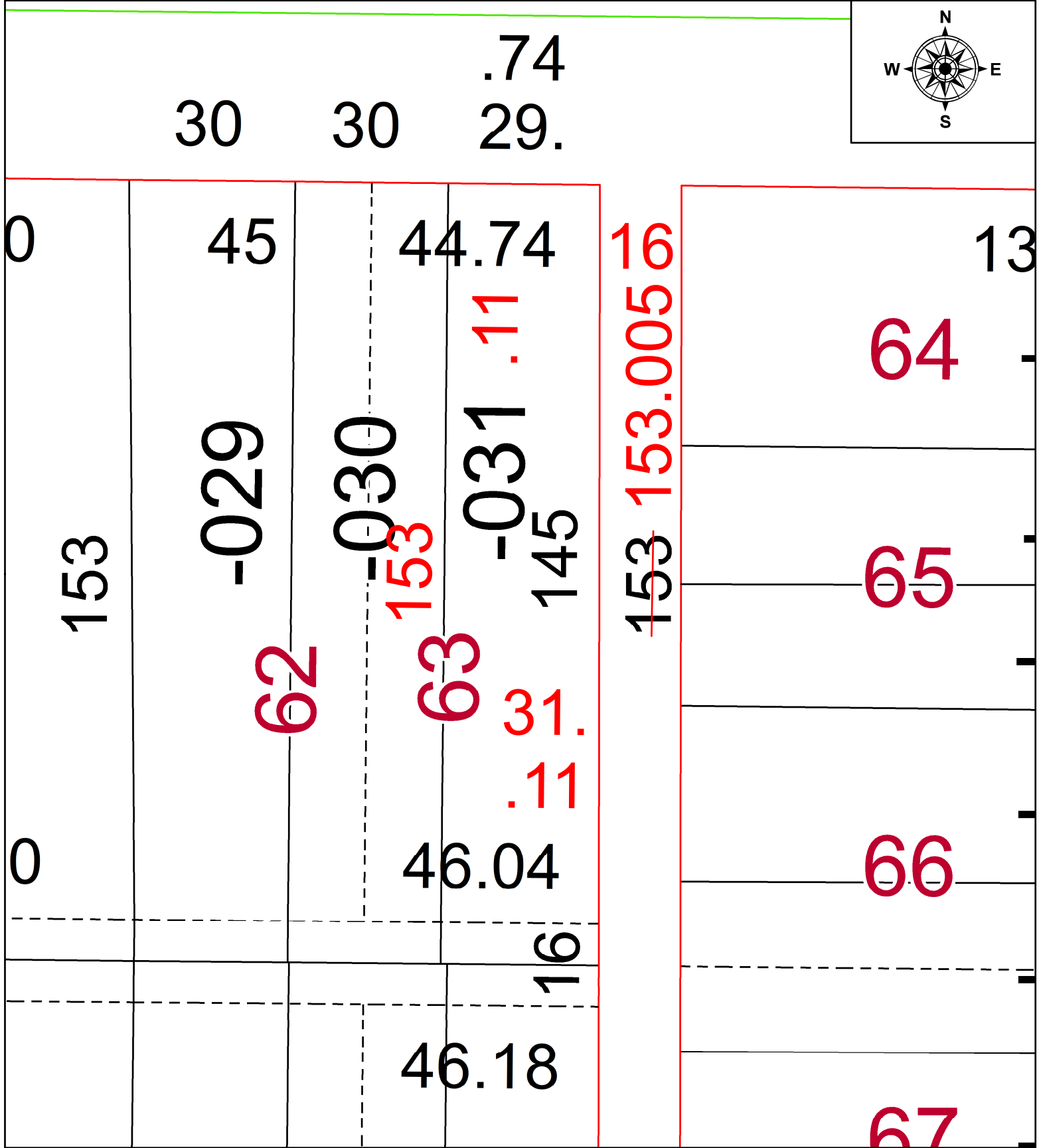
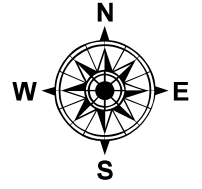


PARENT PARCEL: 02-01-006-135-031

CHILD PARCEL: FRONT & DEPTH TO AC CORR PER SURV BY MATTHEW A. HILDEBRANDT

24-05270-C

STARTING POINT: C/L OF LONG AVE AND W 17TH ST



SPLITS/DEEDS PROCESSED
 LORAIN COUNTY TAX MAP DEPARTMENT
 226 MIDDLE AVE. ELYRIA, OH

SURVEYED BY: MATTHEW A. HILDEBRANDT SURV # 51159
 CLOSURE: 1: 1204191
 MAP PAGE(S): 02-01-006
 APPROVED BY: AC DATE: April 11, 2024
 SCALE: 1 in = 25 ft PRIOR INSTRUMENT: 2017- 0624349