

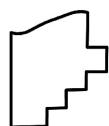
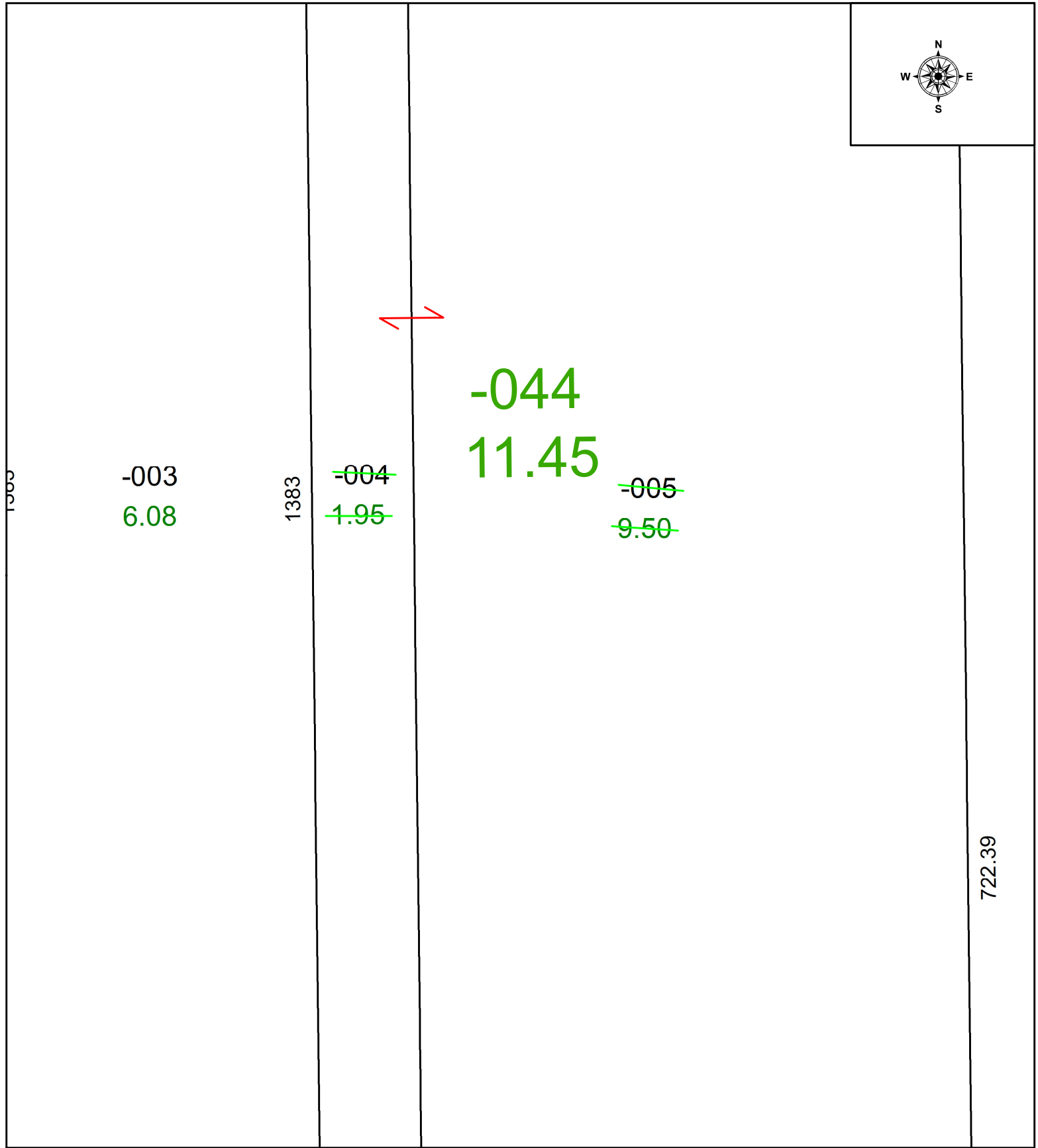
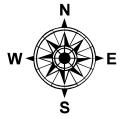
PARENT PARCEL: 15-00-054-000-004 & -005

CHILD PARCEL: 15-00-054-000-044

COMBO PER PRIOR DEED #2020-0796140

24-05269-C

STARTING POINT:



SPLITS/DEEDS PROCESSED

LORAIN COUNTY TAX MAP DEPARTMENT
226 MIDDLE AVE. ELYRIA, OH

SURVEYED BY:	N/A	SURVEY #	N/A
CLOSURE:	1:		
MAP PAGE(S):	15-00-054		
APPROVED BY:	WRZ	DATE:	4/3/2024
SCALE:	1" = 75	PRIOR INSTRUMENT:	#2020-0796140